

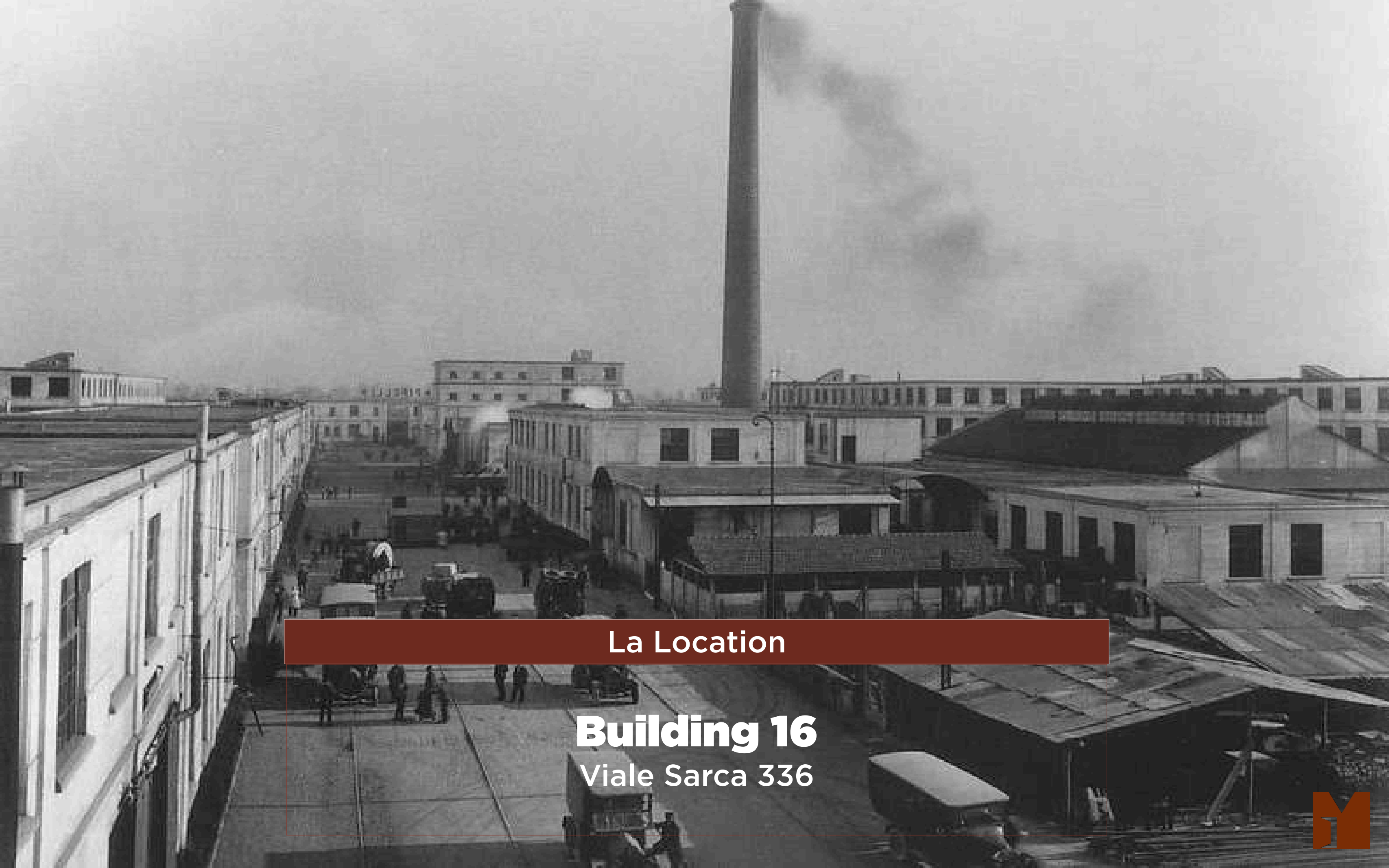
# **MATERIALLY** **/THE SPACE**

**Building 16**  
**Viale Sarca**  
**336 Milan - Italy**

*Materially The Space* is a hub dedicated to **material innovation** that is proposed as a physical meeting place between material producers and their users, through thematic exhibitions, BtoB meetings, events dedicated to materials in the Circular Economy and workshops with different international brands.

*Materially The Space* is supported by over **15 years of experience** and collaboration by our team, with companies in the field of innovative and sustainable materials.





La Location

**Building 16**  
Viale Sarca 336



The space is located in Building 16 of the Ansaldo Group's, a former industrial complex which has undergone renovation and redevelopment work, with the creation of 65 factory lofts that today host different realities.

The area boasts the presence of the headquarters of important multinationals, many research centers, the Bicocca University and a cultural center that includes the Arcimboldi Theater and the Hangar Bicocca.





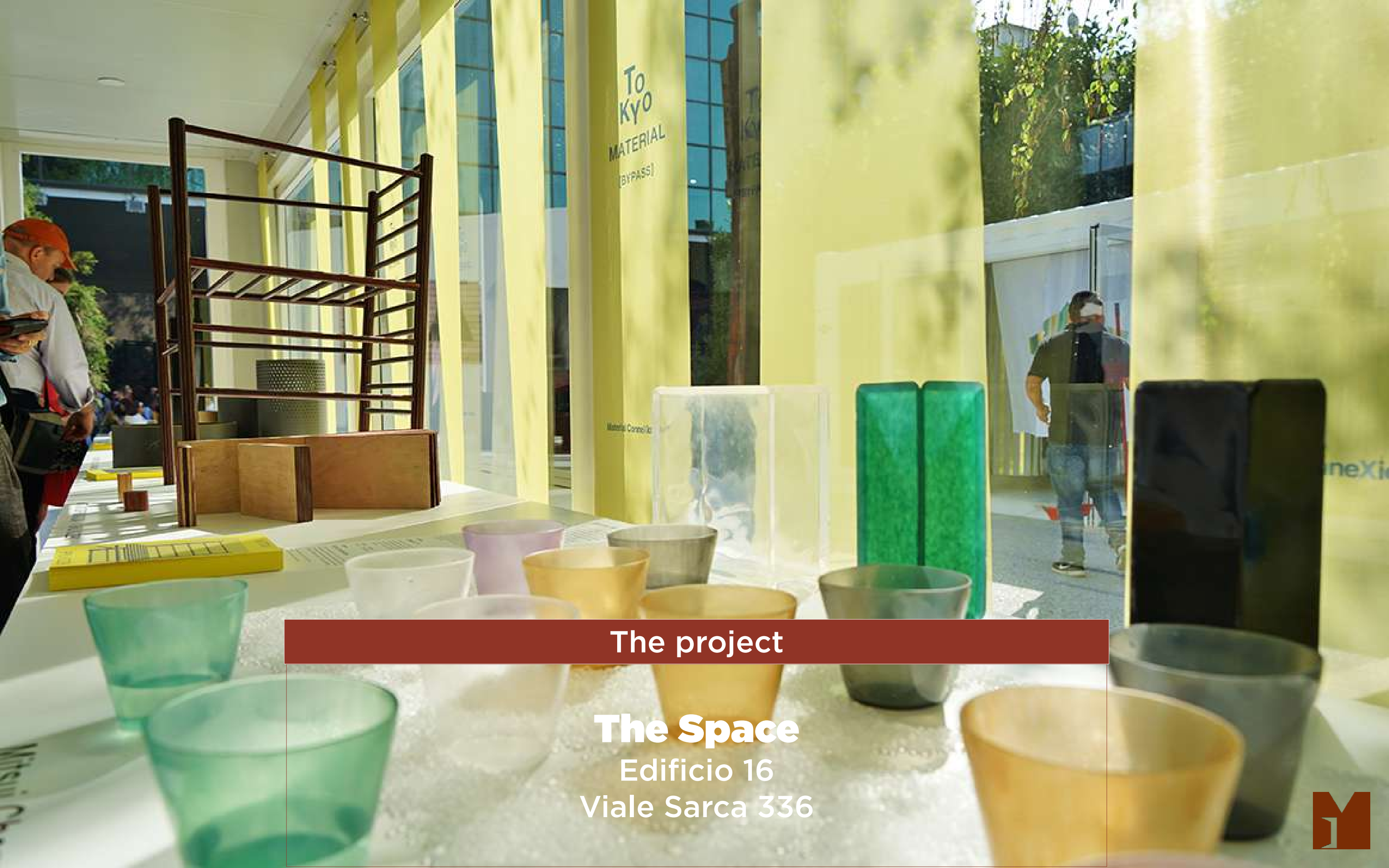
# How to reach us:

The building can be reached through multiple ways:

- Metro: MM1 and MM5 lines
- Tram: n° 11 with stop in Viale Fulvio Testi
- Light Rail: n° 7 Arcimboldi stop
- Bus: n°44 and n. 51
- Milan / Monza buses
- Car: from the Turin - Venice motorway exit "Milan - Viale Zara" take direction for Milan city center.







## The project

**The Space**  
Edificio 16  
Viale Sarca 336

*Materially The Space* offers to producers of materials as an active showroom, including a series of services for the Partner Company

## Dedicated space



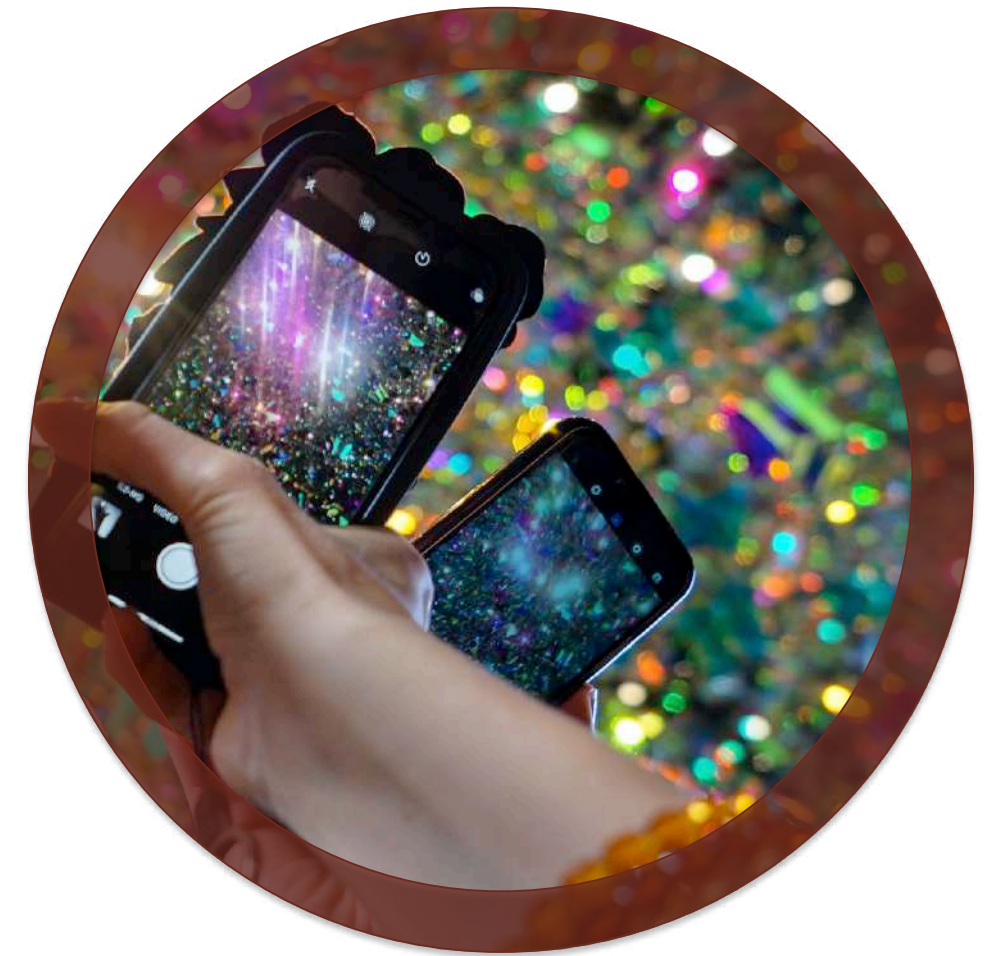
Physical presence in the space, with a dedicated area set up

## Use of facilities



Use of space facilities and assistance from qualified personnel able to tell the product

## Communication and assistance



Communication at our channels



# Dedicated space

The Partner Company has available a dedicated space as follows:

● One wall 200 cm x 250 cm.

● Two side shoulders of 50 cm for h.250 cm

● A space in front of the wall of 200 cm x 100 cm

● A support surface with shelves for paper material, 80 cm x 40 cm x 80 cm

● A space of 1 cubic meter at our warehouse





# Use of facilities

The partner company has the availability of:

● A meeting room, equipped with wi-fi, projector and monitor, for meetings with its customers \*

● Wi-fi access and printers, mail reception and reception service

● Availability of space for a private event per year \*\*

\*availability: ½ day / week - by reservation

\*\* max.30 people during office hours and in accordance with the general calendar





The background of the slide features a close-up of several hands holding smartphones, with the screens displaying colorful, abstract patterns. The background is filled with a dense bokeh of multi-colored lights in shades of red, green, blue, and yellow, creating a festive and high-tech atmosphere.

# Communication and Assistance

## Communication and Assistance

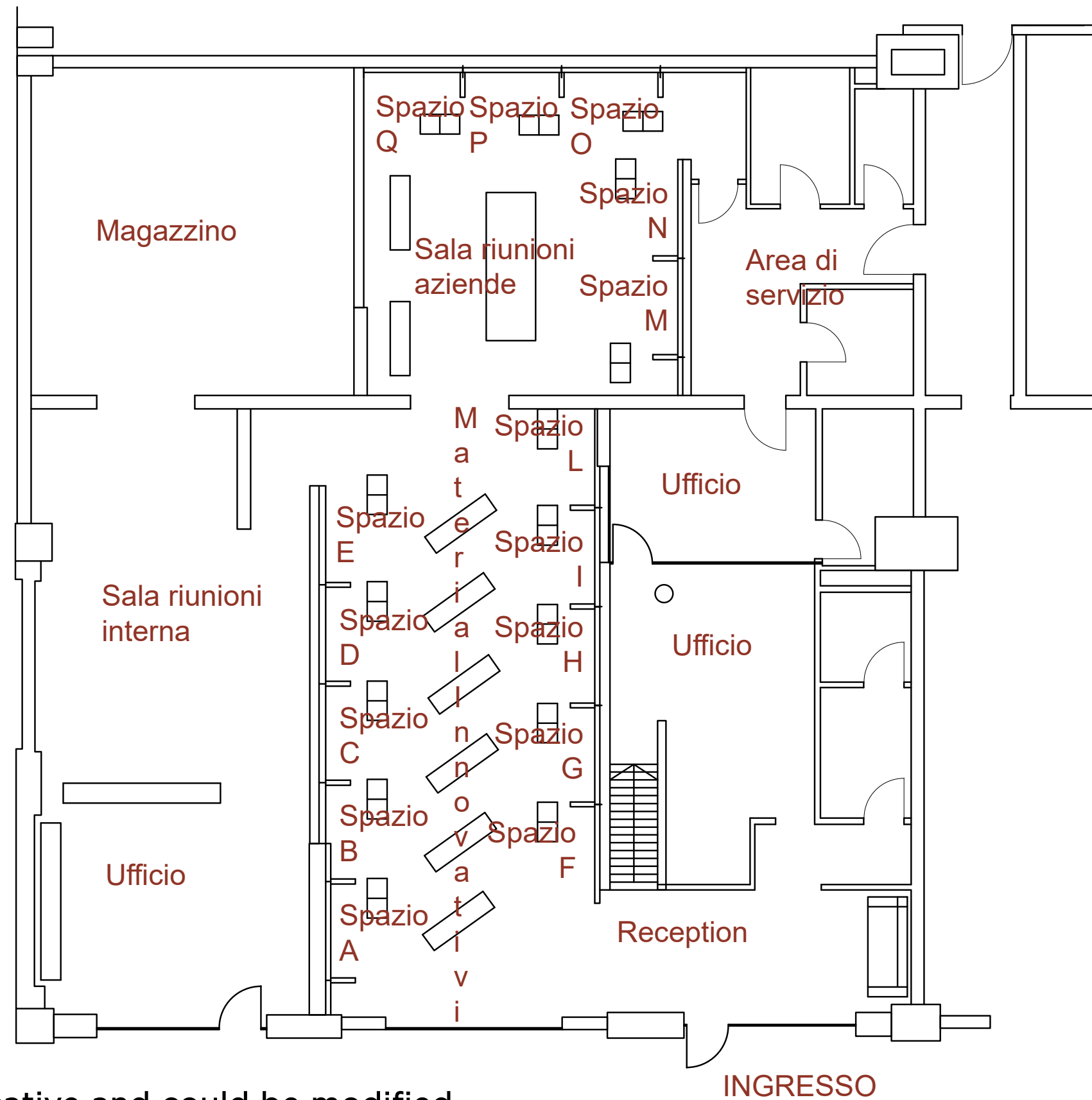
The Company will be mentioned as a Partner on the Materially site, in the section dedicated to The Space on the homepage.

An article will also be dedicated to the products of the Partner Company, present on our website and distributed through the newsletter.

The Partner Company can count on a team of specialists in the field of materials able to tell the products displayed to visitors, to give information about the company, to collect any questions and activate contacts.



# Layout



The general layout is indicative and could be modified





# The Concept







**Federica Pastonesi**  
Special Projects

T +39 0286891720

C +39 3497757177

E [fpastonesi@materialconnexion.it](mailto:fpastonesi@materialconnexion.it)