



TAI PING

Lattice Wool Series



Lattice Wool Series

Lattice Wool Series

Tai Ping introduces *Lattice Wool Series*, spectacularly extending its portfolio of textured designs. Through this second opus, the Hong Kong house honours the world of possibilities offered by wool.

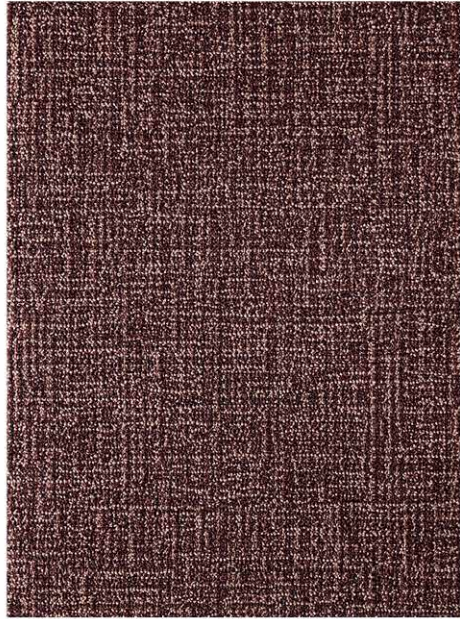
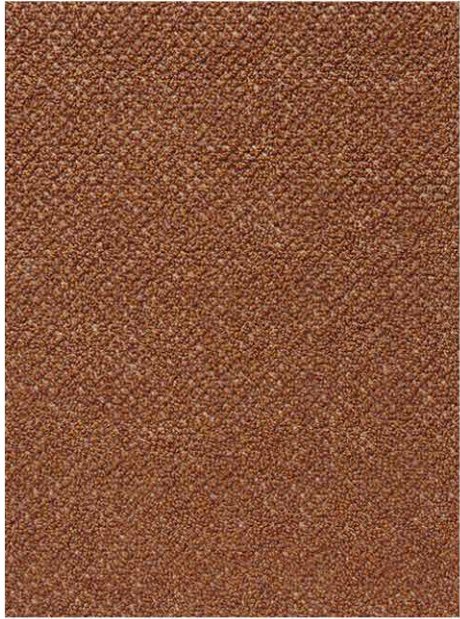
With ten designs, the collection uses the incredible latitude allowed by its perfect mastery to magnify the natural beauty of the yarn. With a broad spectrum of semi-plains, *Lattice Wool Series* comprises designs echoing luxurious fabrics, such as tweed, both embracing and revisiting the common vocabulary of wool. While the selection of textures appears to epitomize graphic patterns, from geometric classics to reinterpreted animals, it gives a bolder approach to the limitless potential of the fibre.

Once more, Tai Ping artisans have outdone themselves in terms of skills. Different constructions - such as loop, cut, or cut & loop - combined with the in-house legendary hand-tuft and over-tuft techniques are used in various pile-heights to create outstanding textures and visual effects.

A true essence of the line's elegance, the colour palette carries graceful neutrals, from sandy beiges to pearly greys. Complemented by a curated selection of muted and subtle hues such as warm burgundies, earthy yellows, or deep ultramarine blues, *Lattice Wool Series* is genuinely aligned with the beauty of wool's core identity.



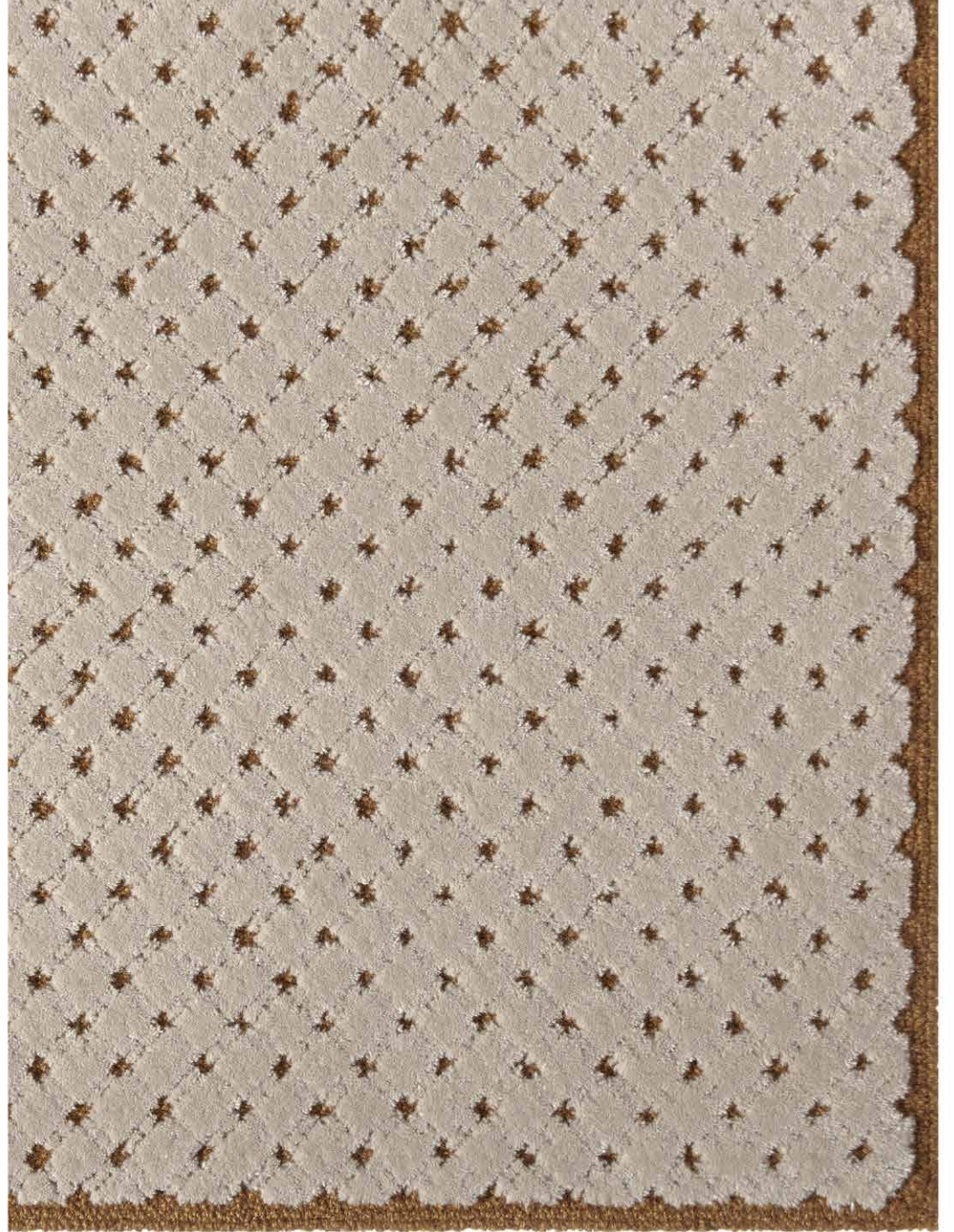
Pandora XXII - Rug (2 x 3 m)



Pandora XXII

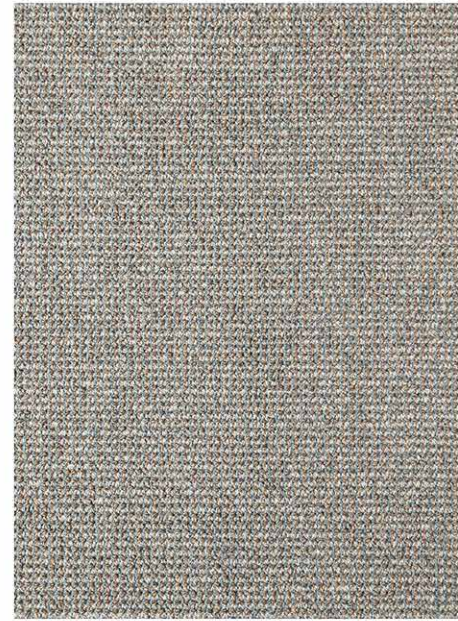
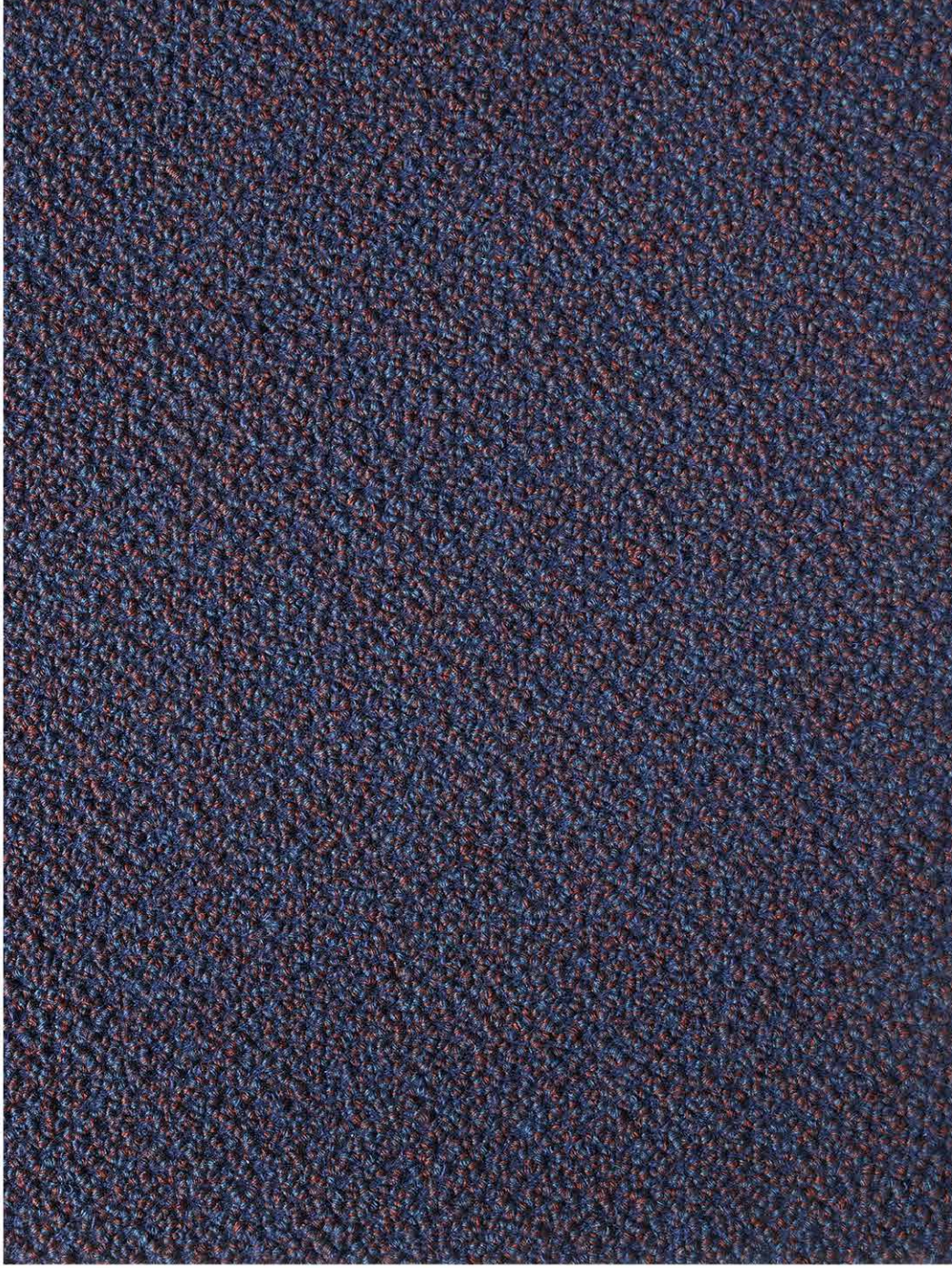
Ozone XX

Brim XXII >





Ozone XX - Rug (2 x 3 m)



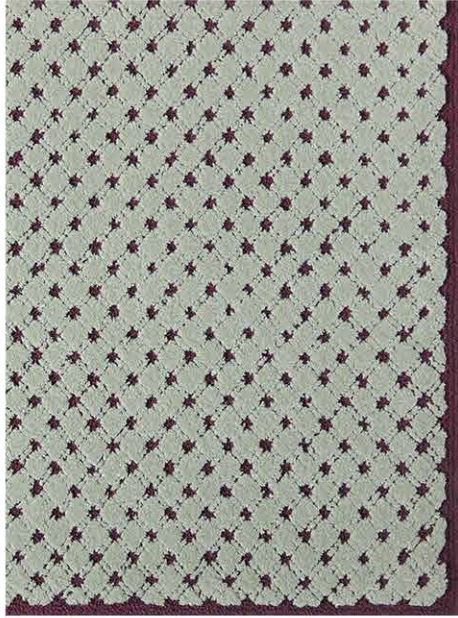
< Pandora XX

Waterbore XXIII

Welt XXII



Brim XX - Rug (2 x 3 m)



Pandora XXI

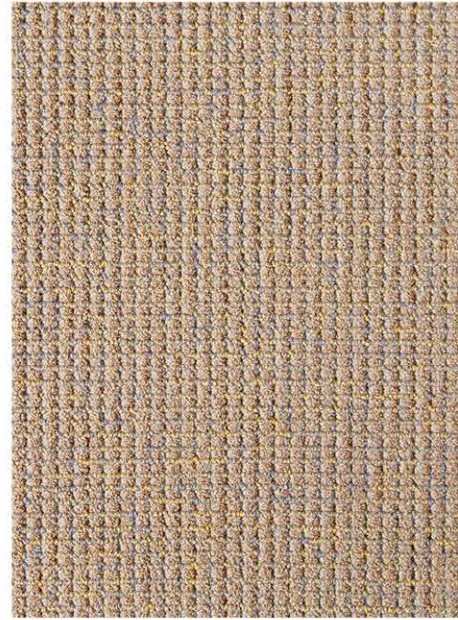
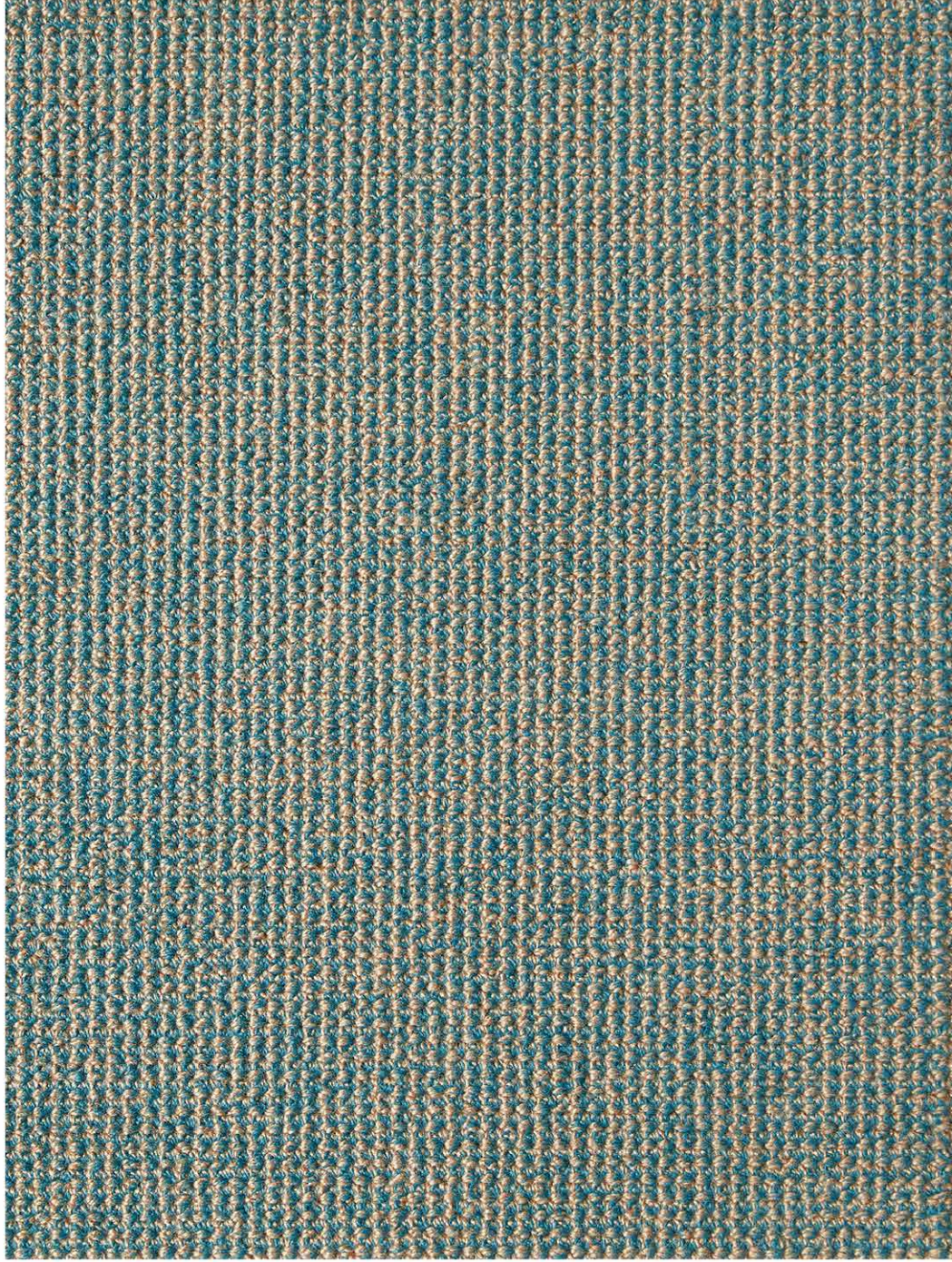
Brim XX

Ponoka XXII >





Stuff XXI - Rug (3,6 m. diam.)



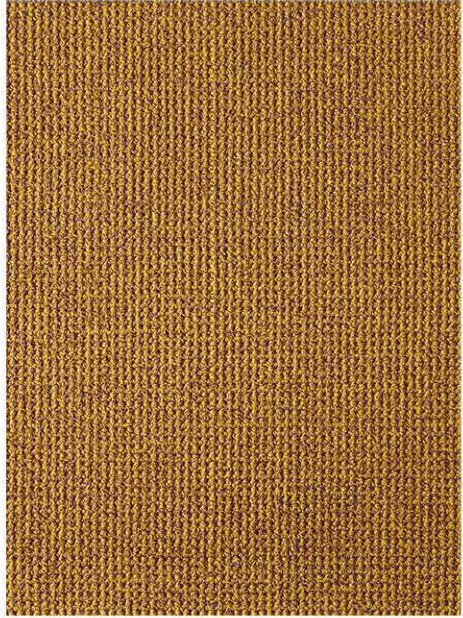
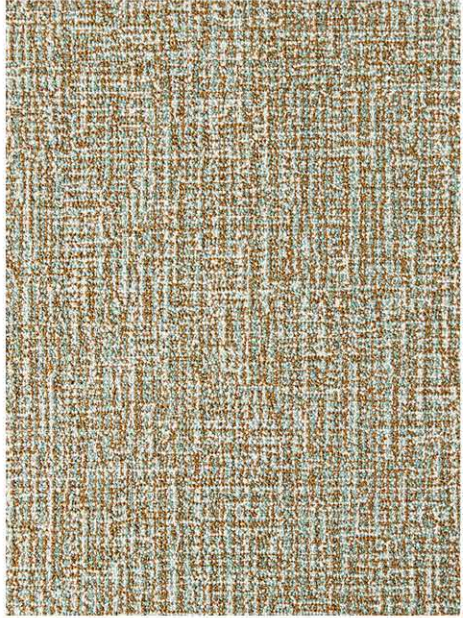
< Riata XX

Ponoka XX

Stuff XXI



Riata XXI - Rug (2 x 3 m)



Ozone XXII

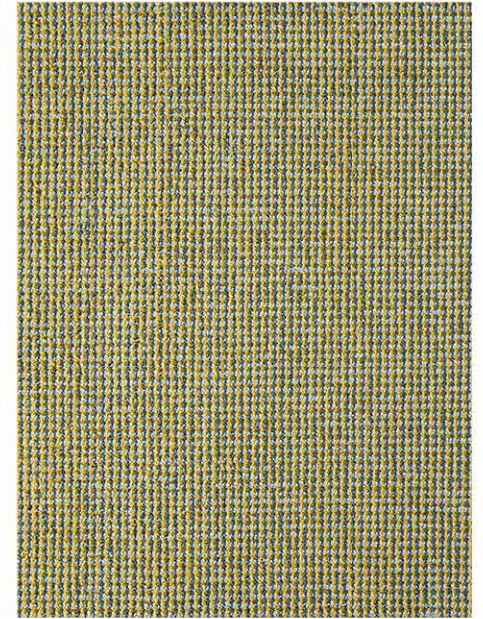
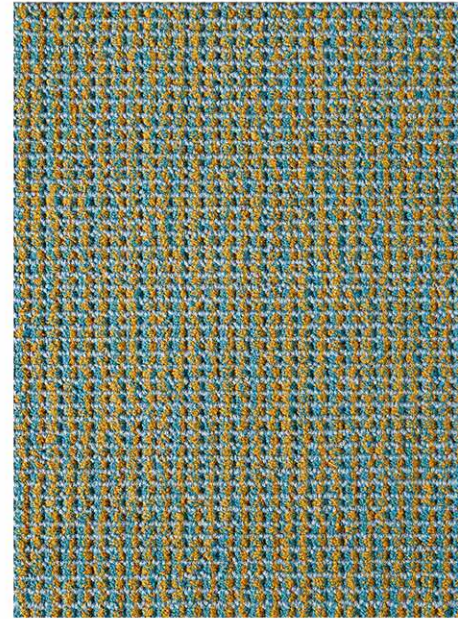
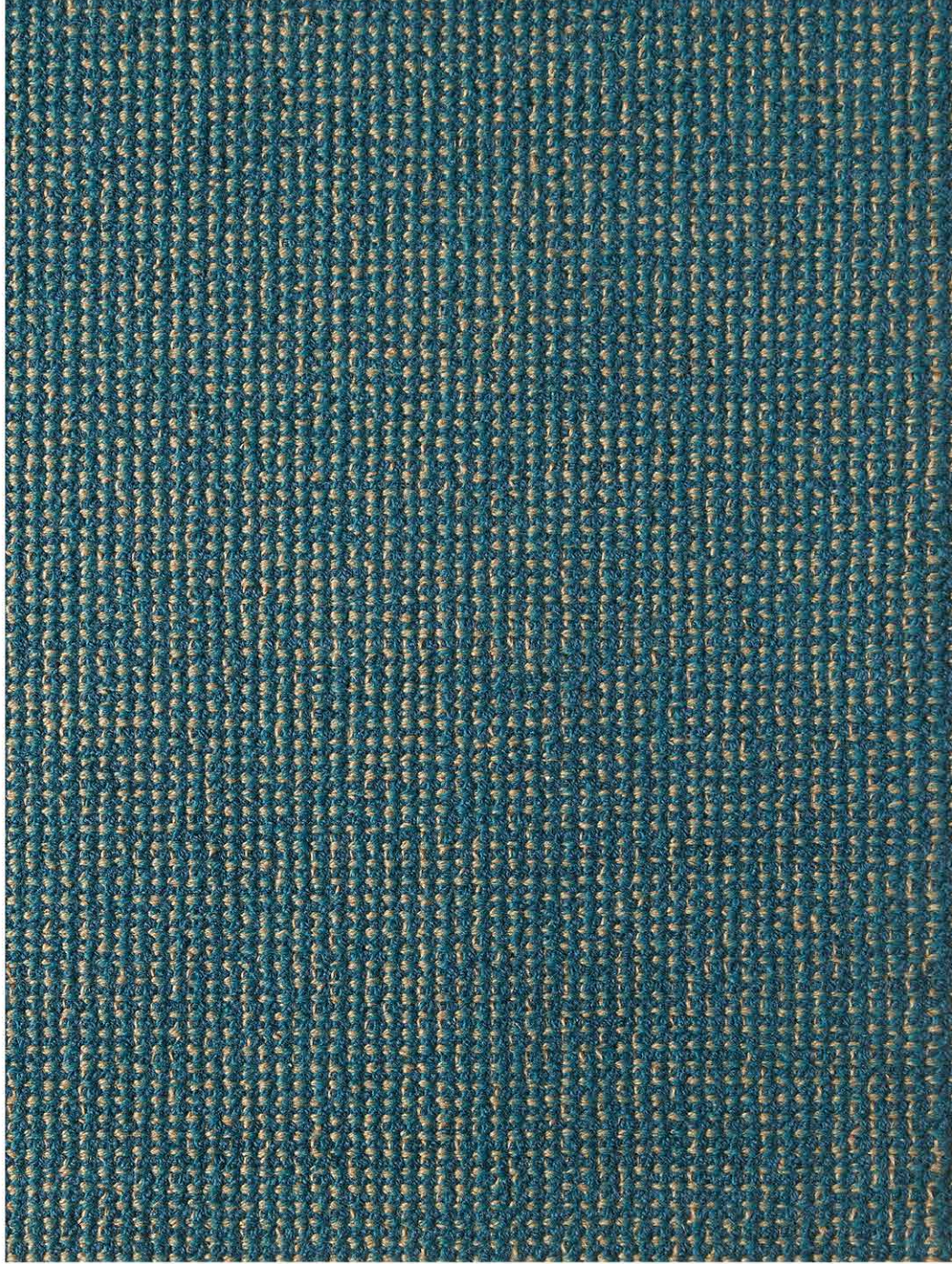
Riata XXI

Ozone XXI >





Ozone XXII - Rug (2 x 3 m)



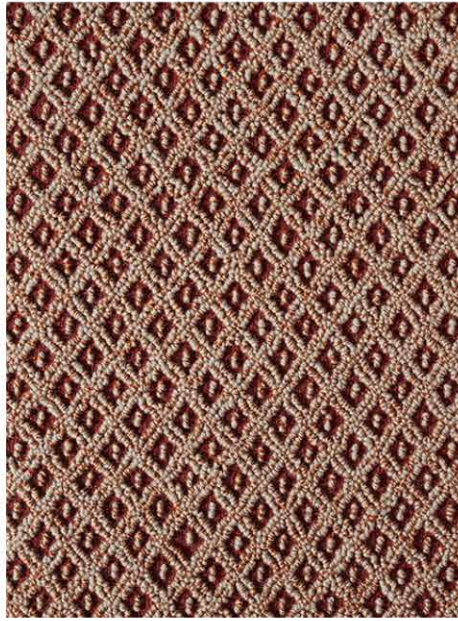
< Waterbore XXI

Ponoka XXI

Luna XXI



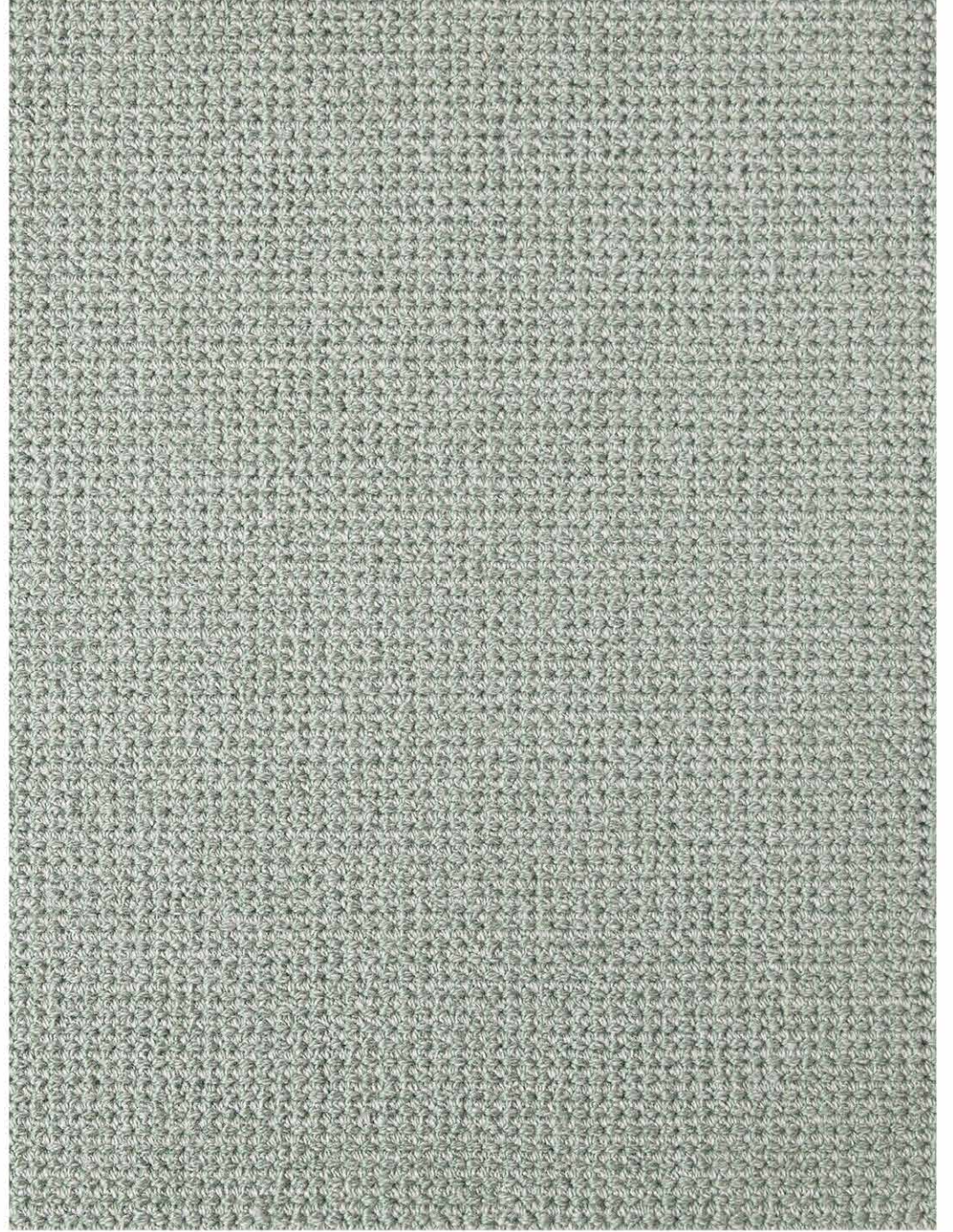
Welt XX - Rug (2 x 3 m)



Waterbore XXII

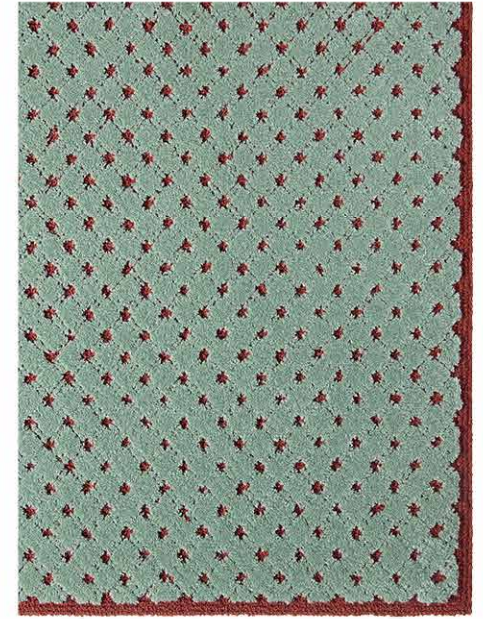
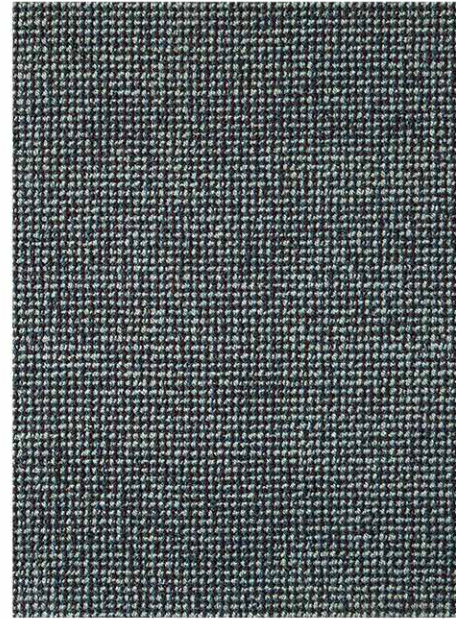
Welt XX

Riata XXII >





Diurnal/Waterbore Composition - Rug (2,50 x 3,50 m)



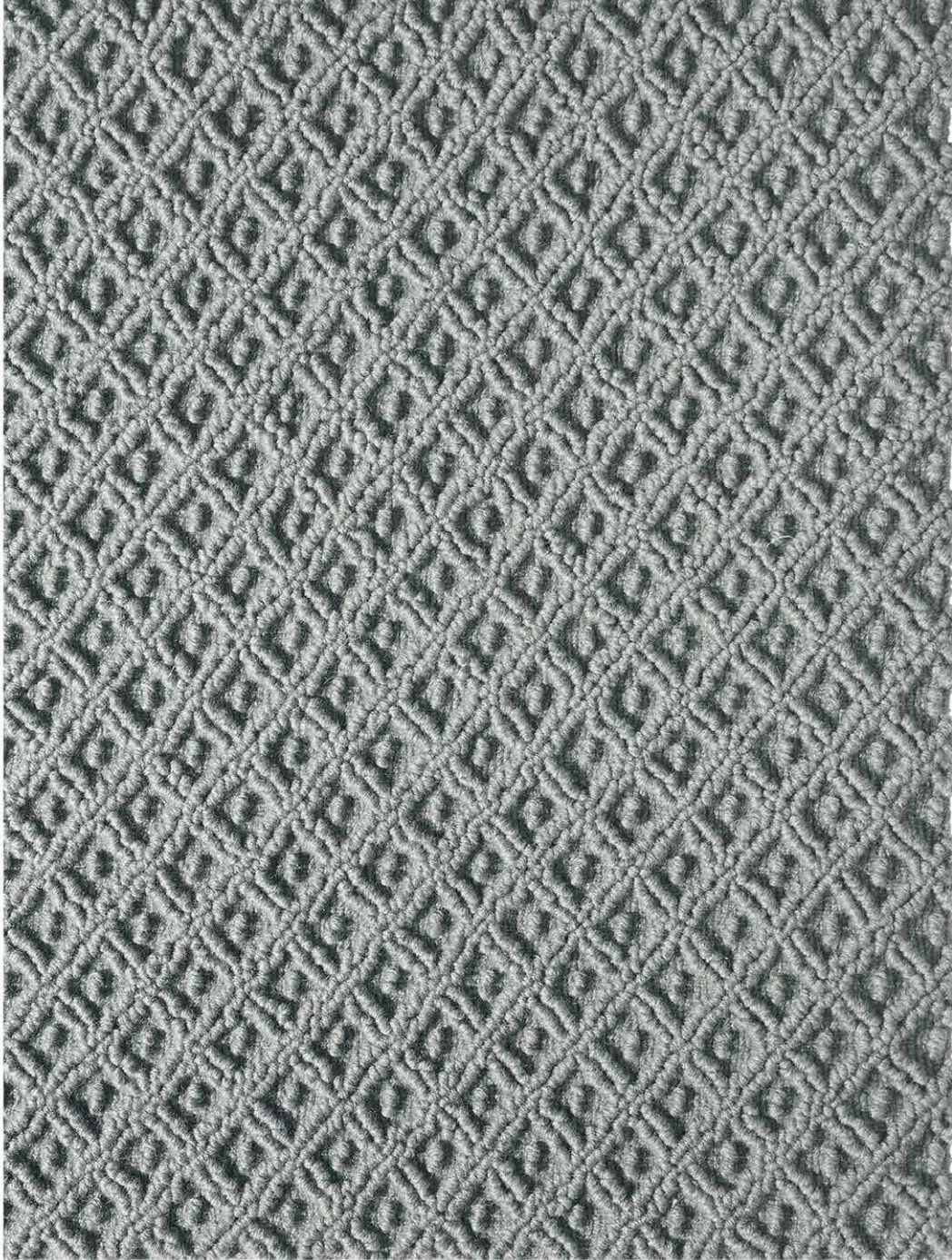
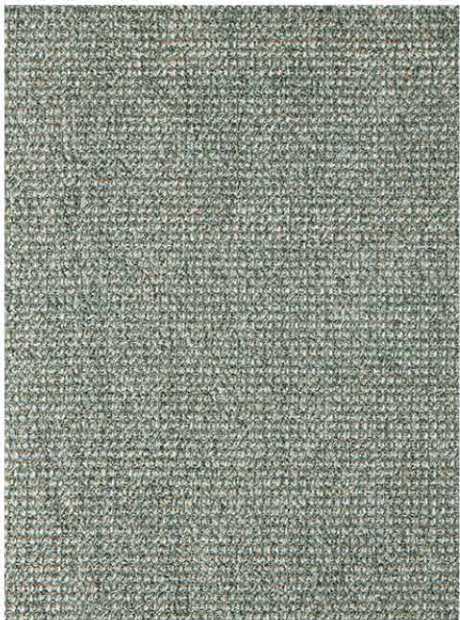
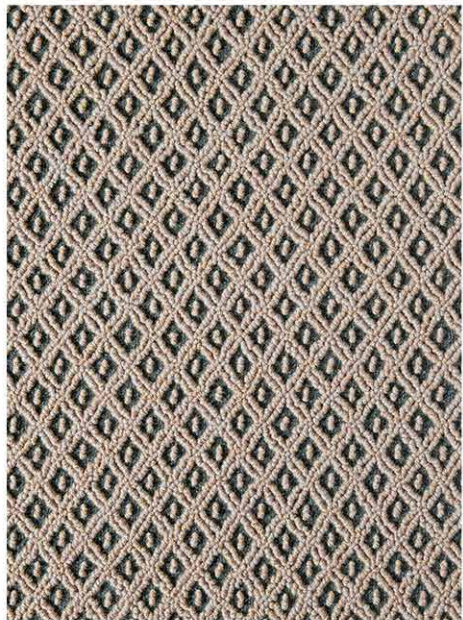
< Diurnal XX

Waterbore XX

Brim XXI



Waterbore XX - Rug (2 x 3 m)



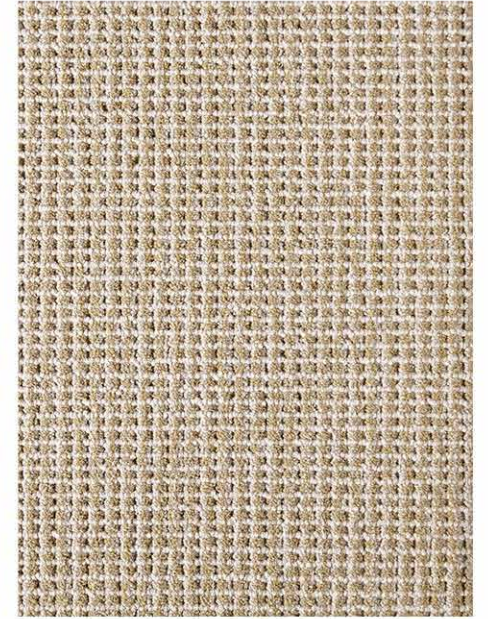
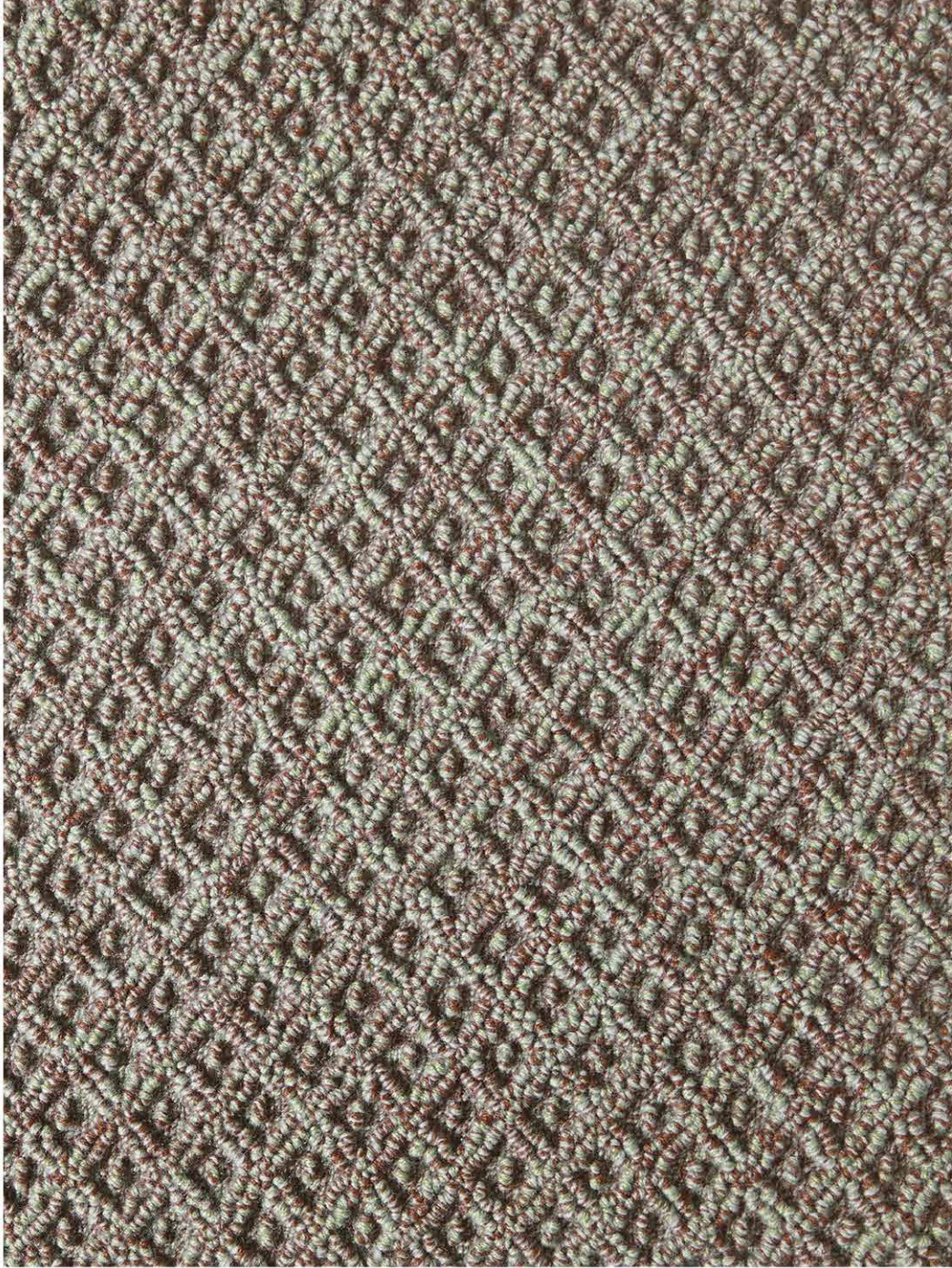
Welt XXIII

Luna XX

Welt XXIV >



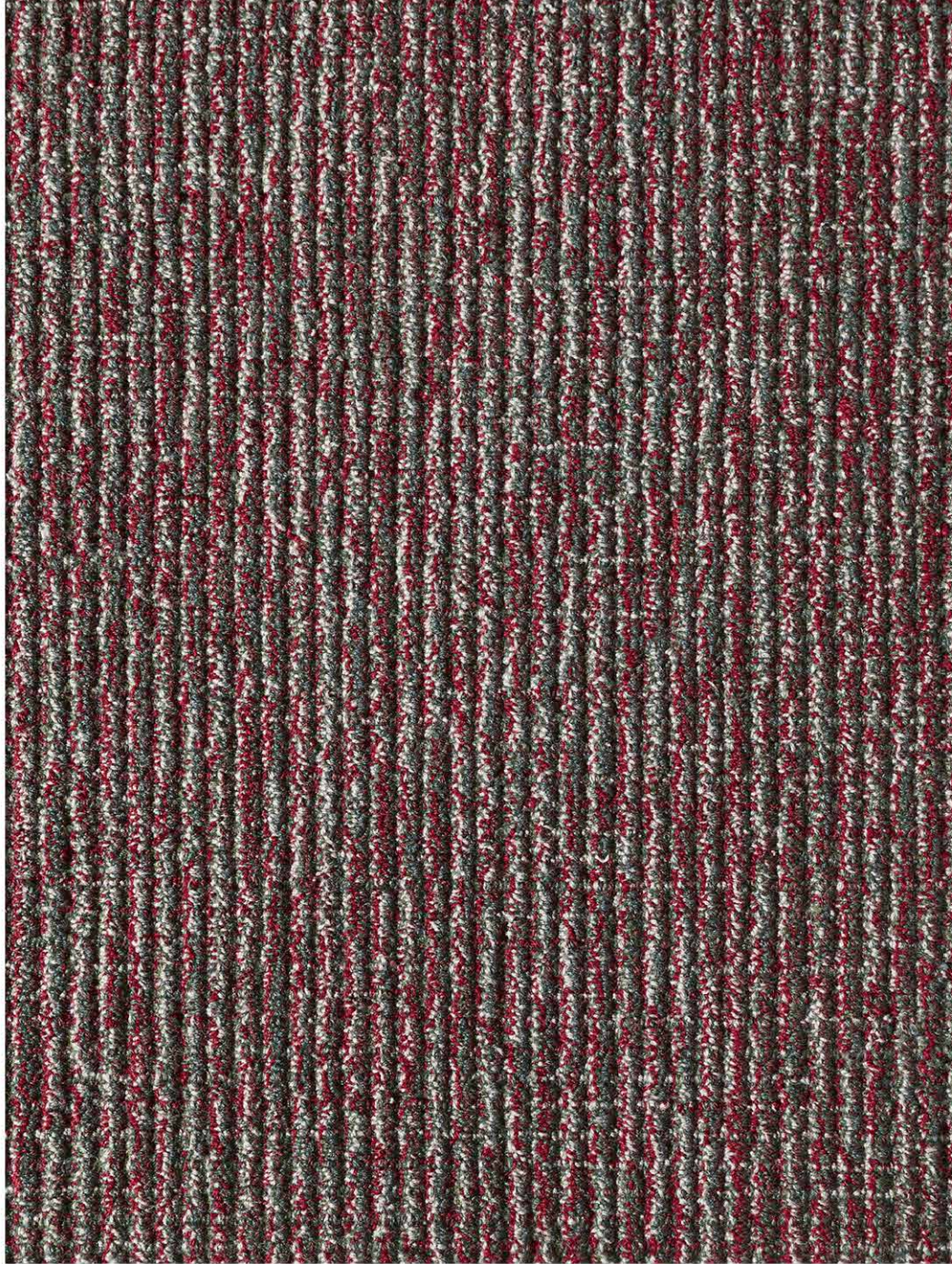
Welt XXIII - Rug (2 x 3 m)



< Welt XXI

Stuff XX

Ponoka XXIII



< Diurnal XXI

Rugs



Brim XX (Wool)
p. 12-13
2 x 3 m
6'6" x 9'8"



Diurnal/Waterbore
Composition (Wool)
p. 32-33
2,50 x 3,50 m
8'2" x 11'5"



Ozone XX (Wool)
p. 8-9
2 x 3 m
6'6" x 9'8"



Stuff XXI (Wool)
p. 16-17
Diam. 3,60 m
Diam. 11'9"



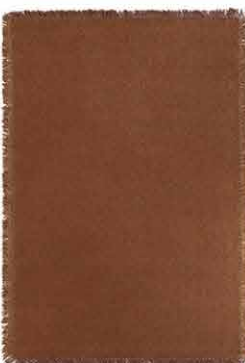
Waterbore XX (Wool)
p. 36-37
2 x 3 m
6'6" x 9'8"



Welt XX (Wool)
p. 28-29
2 x 3 m
6'6" x 9'8"



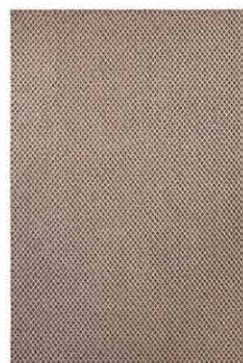
Ozone XXII (Wool)
p. 24-25
2 x 3 m
6'6" x 9'8"



Pandora XXII (Wool)
p. 4-5
2 x 3 m
6'6" x 9'8"



Riata XXI (Wool)
p. 20-21
2 x 3 m
6'6" x 9'8"



Welt XXIII (Wool)
p. 40-41
2 x 3 m
6'6" x 9'8"

Samples



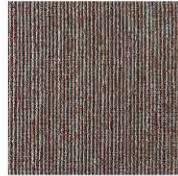
Brim XX (Wool)
p. 14
60 x 60 cm
2' x 2'



Brim XXI (Wool)
p. 35
60 x 60 cm
2' x 2'



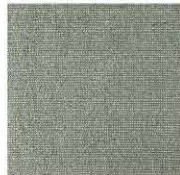
Brim XXII (Wool)
p. 7
60 x 60 cm
2' x 2'



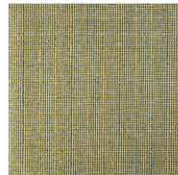
Diurnal XX (Wool)
p. 34
60 x 60 cm
2' x 2'



Diurnal XXI (Wool)
p. 44
60 x 60 cm
2' x 2'



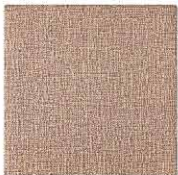
Luna XX (Wool)
p. 38
60 x 60 cm
2' x 2'



Luna XXI (Wool)
p. 27
60 x 60 cm
2' x 2'



Ozone XX (Wool)
p. 6
60 x 60 cm
2' x 2'



Ozone XXI (Wool)
p. 23
60 x 60 cm
2' x 2'



Ozone XXII (Wool)
p. 22
60 x 60 cm
2' x 2'



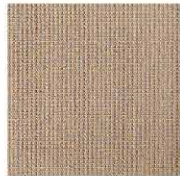
Pandora XX (Wool)
p. 10
60 x 60 cm
2' x 2'



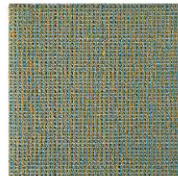
Pandora XXI (Wool)
p. 14
60 x 60 cm
2' x 2'



Pandora XXII (Wool)
p. 6
60 x 60 cm
2' x 2'



Ponoka XX (Wool)
p. 19
60 x 60 cm
2' x 2'



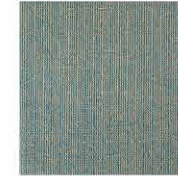
Ponoka XXI (Wool)
p. 27
60 x 60 cm
2' x 2'



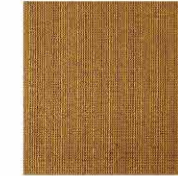
Ponoka XXII (Wool)
p. 15
60 x 60 cm
2' x 2'



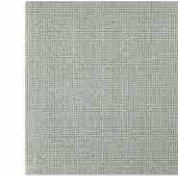
Ponoka XXIII (Wool)
p. 43
60 x 60 cm
2' x 2'



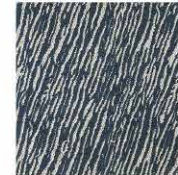
Riata XX (Wool)
p. 18
60 x 60 cm
2' x 2'



Riata XXI (Wool)
p. 22
60 x 60 cm
2' x 2'



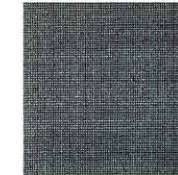
Riata XXII (Wool)
p. 31
60 x 60 cm
2' x 2'



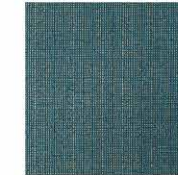
Stuff XX (Wool)
p. 43
60 x 60 cm
2' x 2'



Stuff XXI (Wool)
p. 19
60 x 60 cm
2' x 2'



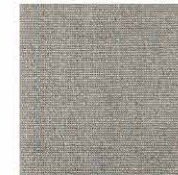
Waterbore XX (Wool)
p. 35
60 x 60 cm
2' x 2'



Waterbore XXI (Wool)
p. 26
60 x 60 cm
2' x 2'



Waterbore XXII (Wool)
p. 30
60 x 60 cm
2' x 2'



Waterbore XXIII (Wool)
p. 11
60 x 60 cm
2' x 2'



Welt XX (Wool)
p. 30
60 x 60 cm
2' x 2'



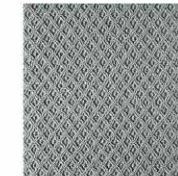
Welt XXI (Wool)
p. 42
60 x 60 cm
2' x 2'



Welt XXII (Wool)
p. 11
60 x 60 cm
2' x 2'



Welt XXIII (Wool)
p. 38
60 x 60 cm
2' x 2'



Welt XXIV (Wool)
p. 39
60 x 60 cm
2' x 2'

Locations

Americas

New York (Flagship)
26 West 17th Street
Second Floor
New York, NY 10011
T. +1 212 979 2233
ny@taipingcarpets.com

Chicago
222 Merchandise Mart
Plaza
Suite 635
Chicago, IL 60654
T. +1 312 644 0400
chicago@taipingcarpets.com

Dania Beach
DCOTA
Suite C228
1855 Griffin Road
Dania Beach, FL 33004
T. +1 954 923 4888
dania@taipingcarpets.com

Dallas
1025 N. Stemmons
Freeway
Suite 310
Dallas, TX 75207
T. +1 214 741 4215
dallas@taipingcarpets.com

Los Angeles
Pacific Design Center
8687 Melrose Avenue
Suite B400
Los Angeles, CA 90069
T. +1 310 652 3058
la@taipingcarpets.com

San Francisco
111 Rhode Island Street
Suite 11
San Francisco, CA 94103
T. +1 415 431 4373
sf@taipingcarpets.com

Europe

Paris (Flagship)
4-6, rue de Montalembert
75007 Paris
France
T. +33 1 42 22 96 54
paris@taipingcarpets.com

Hamburg
Steinhöft 11
20459 Hamburg
Germany
T. +49 40 80 81 94 90
hamburg@taipingcarpets.com

London
Chelsea Harbour
406-407 Design Centre
East
London SW10 0XF
UK
T. +44 207 808 9650
london@taipingcarpets.com

Milan
Piazza San Smpliciano
20121 Milano
Italy
T. +39 02 83 43 96 20
italy@taipingcarpets.com

Asia

Hong Kong
(Headquarters)
No. 1803, 18/F
909 Cheung Sha Wan
Road
Cheung Sha Wan
Kowloon
T. +852 2848 7668
hongkong@
taipingcarpets.com

Hong Kong (Showroom)
213 Prince's Building
10 Chater Road, Central
T. +852 2522 7138
hk@taipingcarpets.com

Shanghai (Flagship)
No. 111 SOHO Tian Shan
Plaza
No. 421 Zi Yun Road
Chang Ning District
Shanghai 200050
T. +86 21 6067 3791
shanghai@taipingcarpets.com

Singapore
Etesse Private Limited
18 Sin Ming Lane,
#05-16 Midview City
Singapore 573960
T. +65 6908 0889
sales@ettesse.com.sg

Taipei
Shops 209-211, 2/F
The Arcade
Mandarin Oriental
166 Dun Hua North Road
Taipei 105
Taiwan
T. +886 2 2718 0469
taipei@taipingcarpets.com

Middle East

Dubai
dubai@taipingcarpets.com

Riyadh
Gallery Design Riyadh
N° 580 Takhassusi Street
Mohammadia District
Riyadh-Saudi Arabia
T. +966 11 200 2360
info@gallerydesign.com.sa

Khobar
Gallery Design Khobar
Prince Turkey Street
Khobar 34611
Saudi Arabia
T. +966 13 864 7667
info@gallerydesign.com.sa

FOR MORE LOCATIONS
-
taipingcarpets.com

Graphic design
Alain Bourdon

Furniture
Cappellini, Kartell,
La Chance

