



NO MORE

# TWIST

textile design studio

PRESS RELEASE

## ABOUT:

The textile design studio «NoMoreTwist» presents a new production of objects that highlight their jacquard weaves. The fabrics are the result of experiments on a loom playing around the color, the thread and its interlocking with a technical and sensitive approach of the material. Collections are 100% made in Belgium from highest quality materials.



Refet fabric - NoMoreTwist © Nathalie Noël

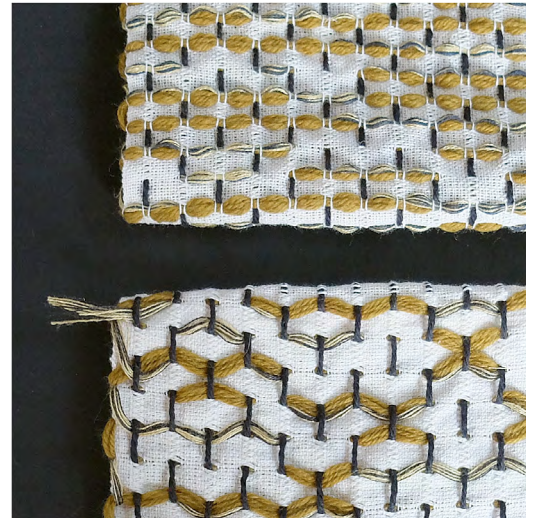


Refet and diffraction double sided fabrics - NoMoreTwist © Nathalie Noël



Clapotis fabric - NoMoreTwist © Nathalie Noël

NoMoreTwist develops a consulting activity for editors and manufacturers, mainly in the furnishing and decoration sector. Managing the technical requirements related to industrial production, the studio adapts to various demands for the design of custom textile. A large range of sample are available for edition or adaptations.



1-Woven samples free for edition © NoMoreTwist



2-Woven samples free for edition © NoMoreTwist

## DESIGNER:

Newly graduated from the Brussels Fine art Academy, in 2010, Marie Beguin founded the NoMoreTwist project - both a place for research and a brand of textile objects. With a background in the art of weaving, she has developed an experimental practice, which leads her, a sample after an other, to push the boundaries of the technique. Amazing and innovative textures come to life on his computerized manual loom. The composition of jacquard patterns is approached from a personal angle, putting weave at the center of the creation process.

\*In the terminology of weaving, the «weave» define the way in which the warp and weft yarns cross each other.



Marie Beguin © Hannes Vandenbroucke



loom © NoMoreTwist

## CONTACT

NoMoreTwist sprl  
28 rue Grandgagnage  
4000 Liège  
Belgium.



[info@nomoretwist.be](mailto:info@nomoretwist.be)



[www.nomoretwist.be](http://www.nomoretwist.be)



[www.instagram.com/nomoretwist\\_textile/](https://www.instagram.com/nomoretwist_textile/)