



The top corners of the page feature decorative geometric patterns. The top-left corner shows a complex, multi-colored pattern with shades of blue, green, and yellow. The top-right corner shows a similar pattern with shades of blue, green, and yellow. The central text is set against a plain white background.

KOLAM CARPETS

The inspiration for this series of hand knotted carpets is Kolam, the ritualistic folk art of creating patterns from rice flour at the entrance of South Indian homes. Lines and loops are drawn around an underlying grid of dots, bringing together the geometric and organic. While preserving the sacrosanct symmetry in individual forms, the designers break free from traditional rules creating unexpected and joyful studies in colour and form, richly layered and dynamic in composition. Kolam has an ephemeral quality that is made permanent with each hand woven knot, through the weaving process. Both crafts, with the lyrical, rhythmic movement of the hand share a meditative quality in their making.



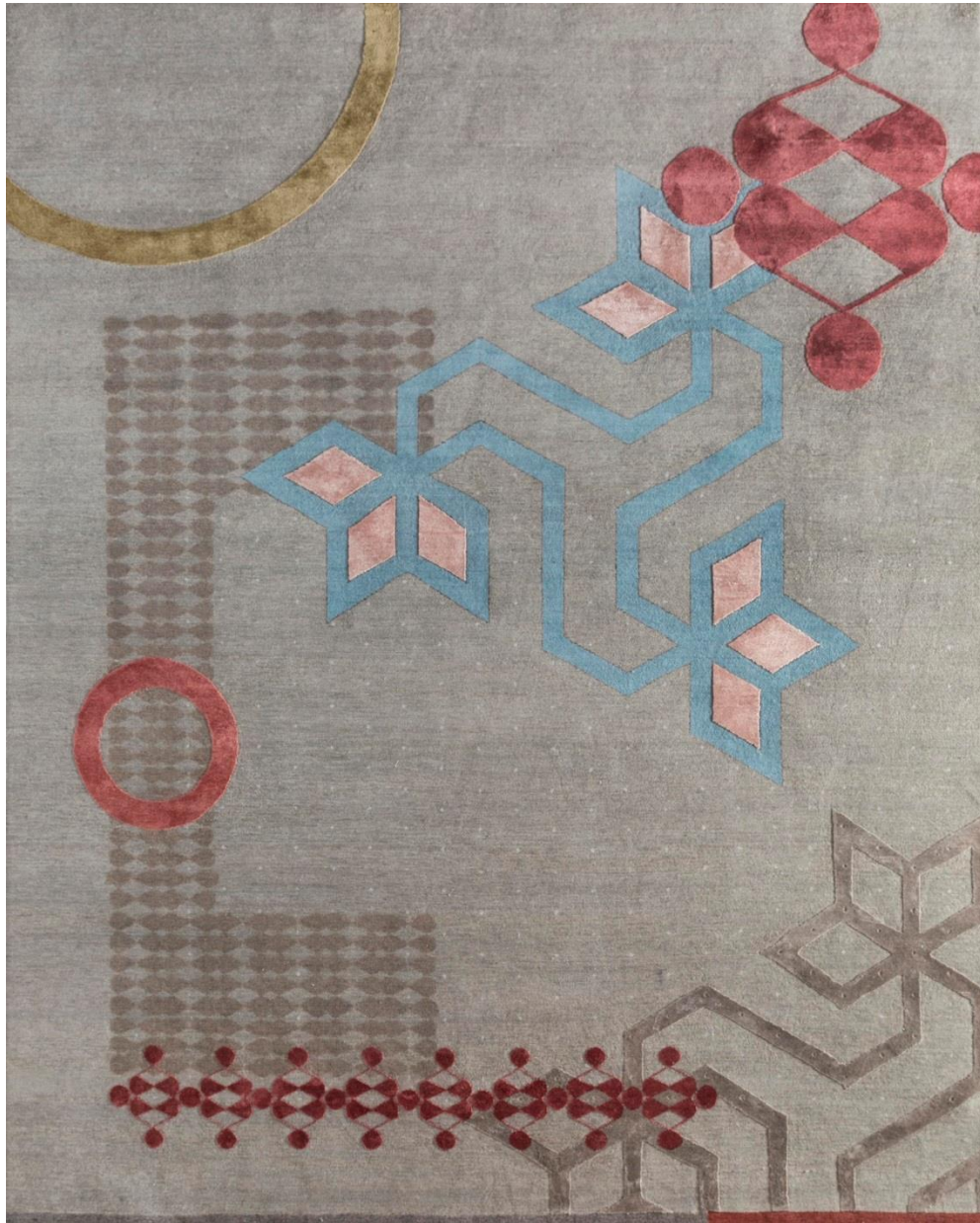
AKWB-7001 Classic Gray 0959-83 Caviar 2171-83





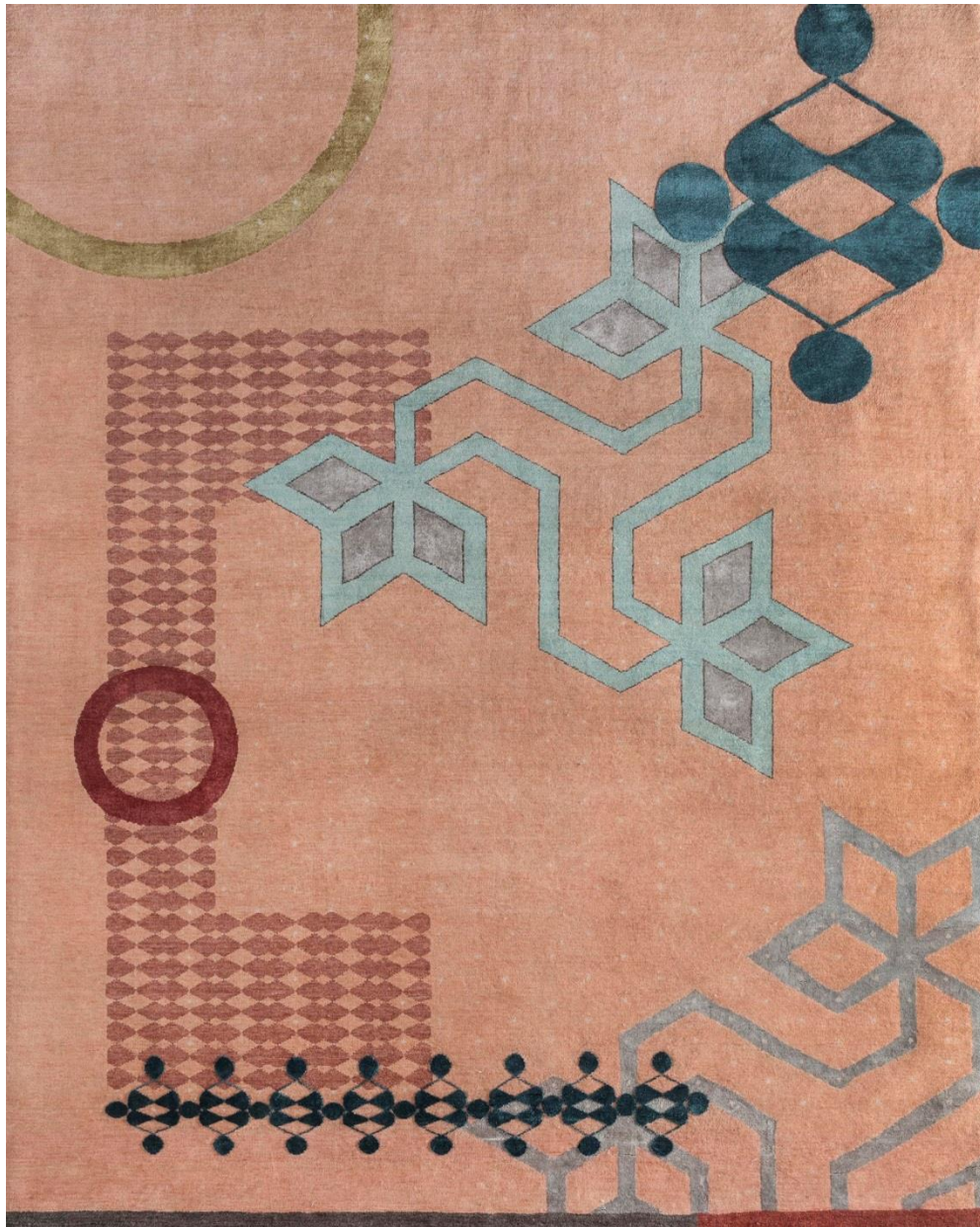
AKWB-7001 Classic Red 0636-83 Caviar 2171-83





AKWB-7002 Classic Gray 0959-83 Classic Gray 0959-83





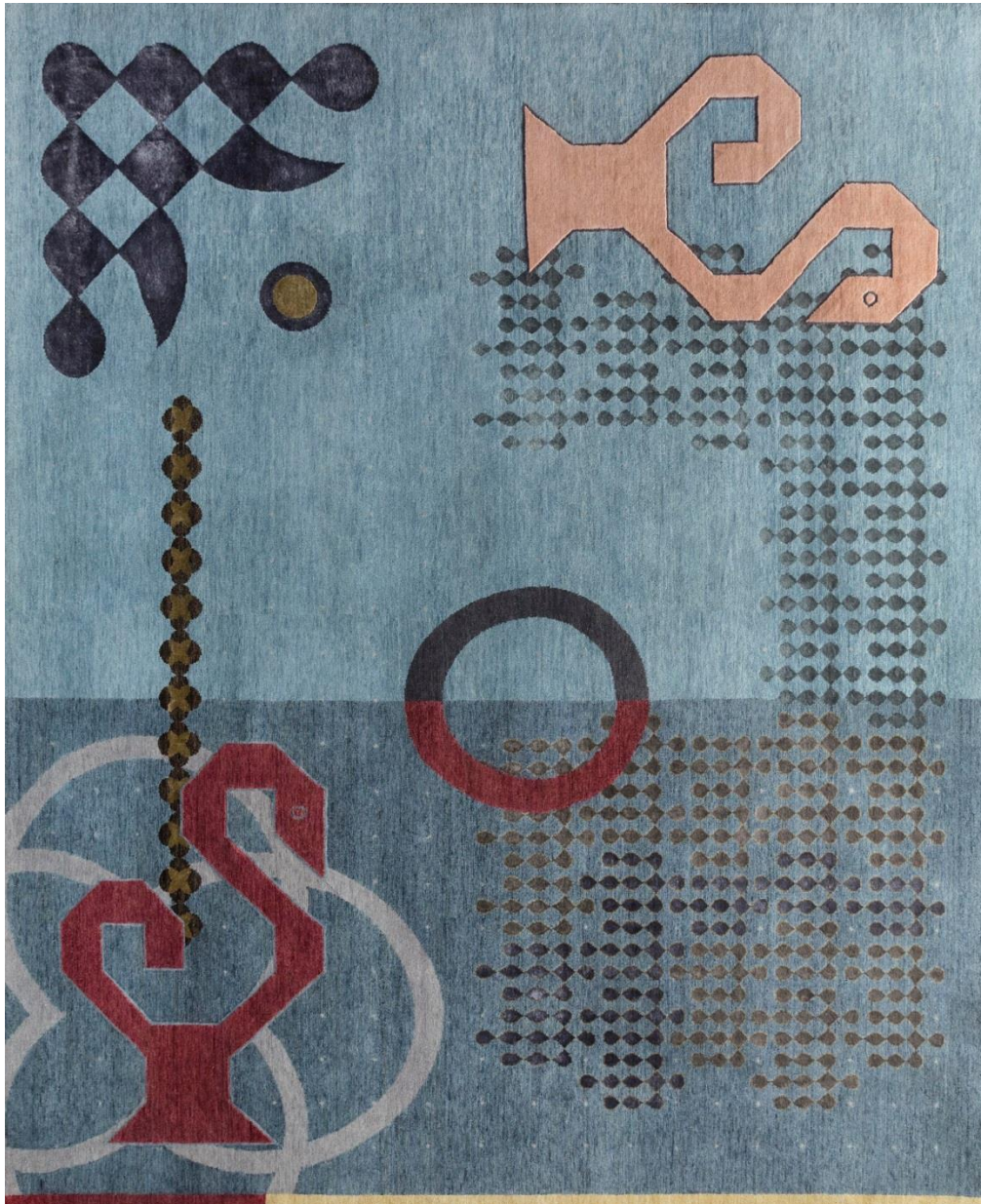
AKWB-7002 Smoky Salmon 1706-83 Smoky Salmon 1706-83





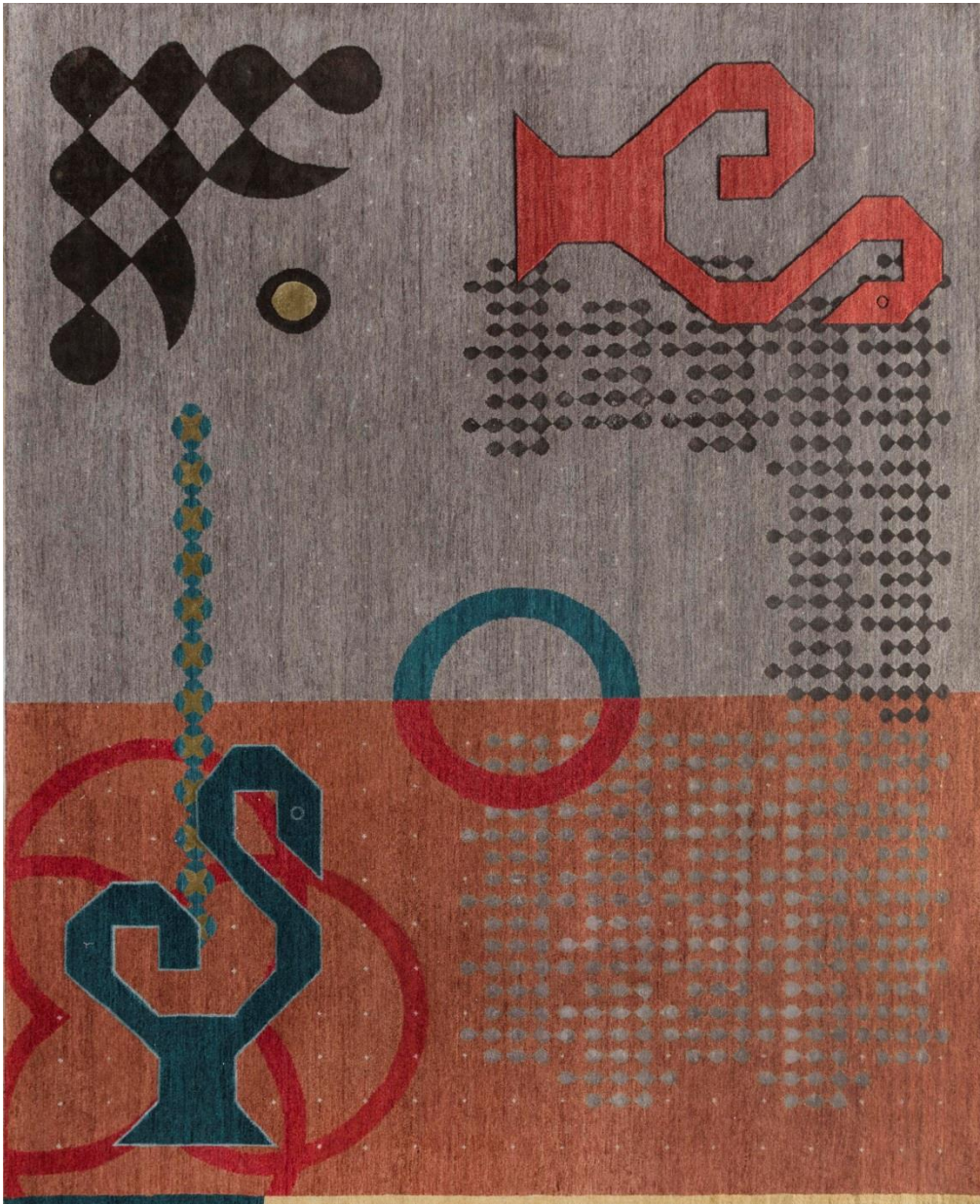
AKWB-7003 Seaside Blue 0166-83 Seaside Blue 0166-83





AKWB-7004 Balsam Green 1177-83 Denim Ash 2157-83





AKWB-7004 Dark Gray 0521-83 Russet 0625-83

