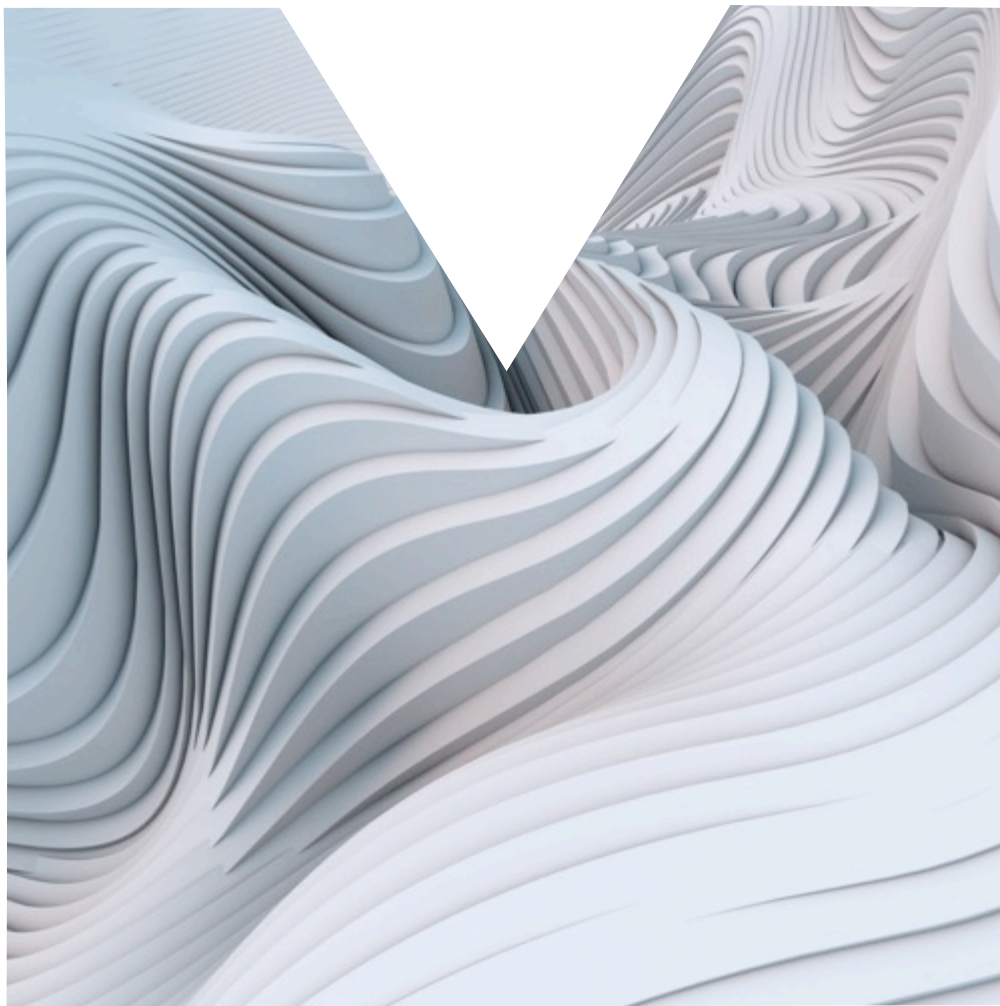


MATERIALLY
THE LAB

all
about
materials_

materially.eu



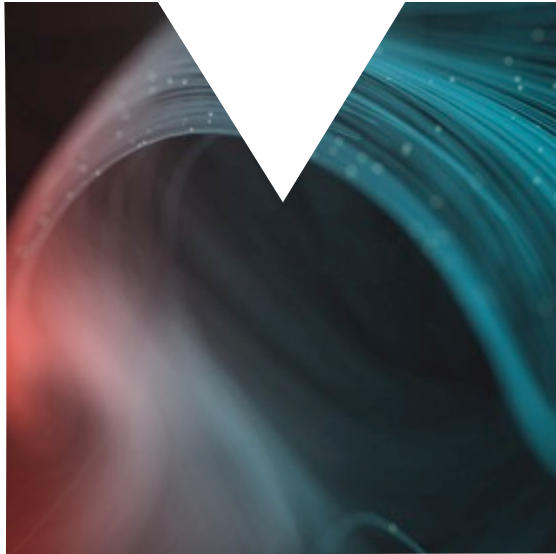
we deliver
innovation, design,
promotion
for materials
manufacturers
and users

Materially helps companies in the development and promotion of sustainable innovation starting from materials.

We work with a focus on Circular Economy and intelligent innovation thanks to design thinking methods and a broad background of international projects and experiences.

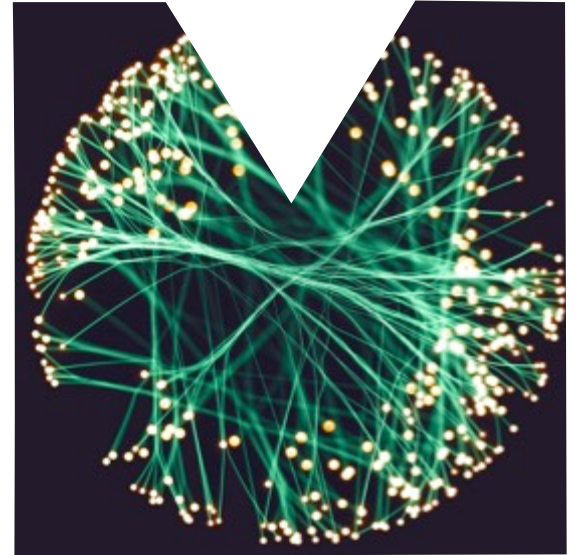
We use materials to help your team:

_inspire the
creative
process_

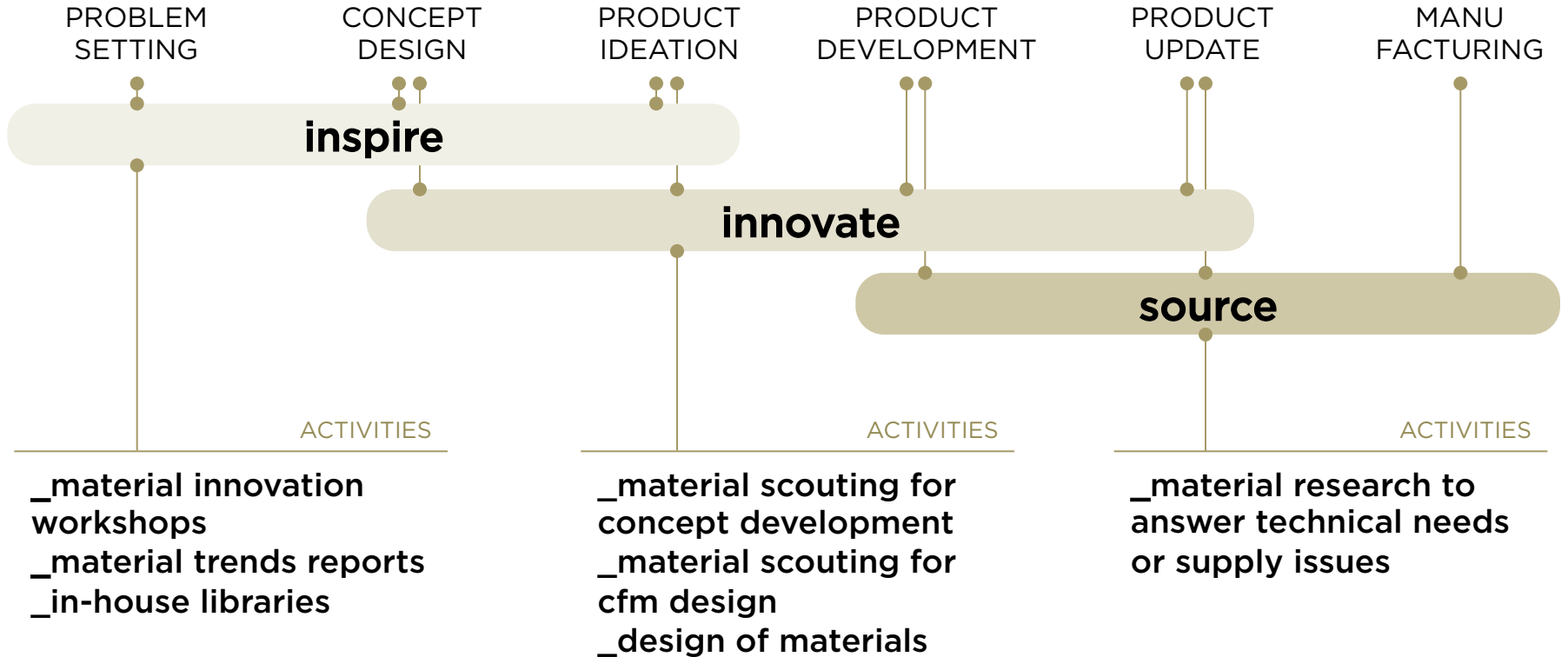


_innovate
products and
processes_

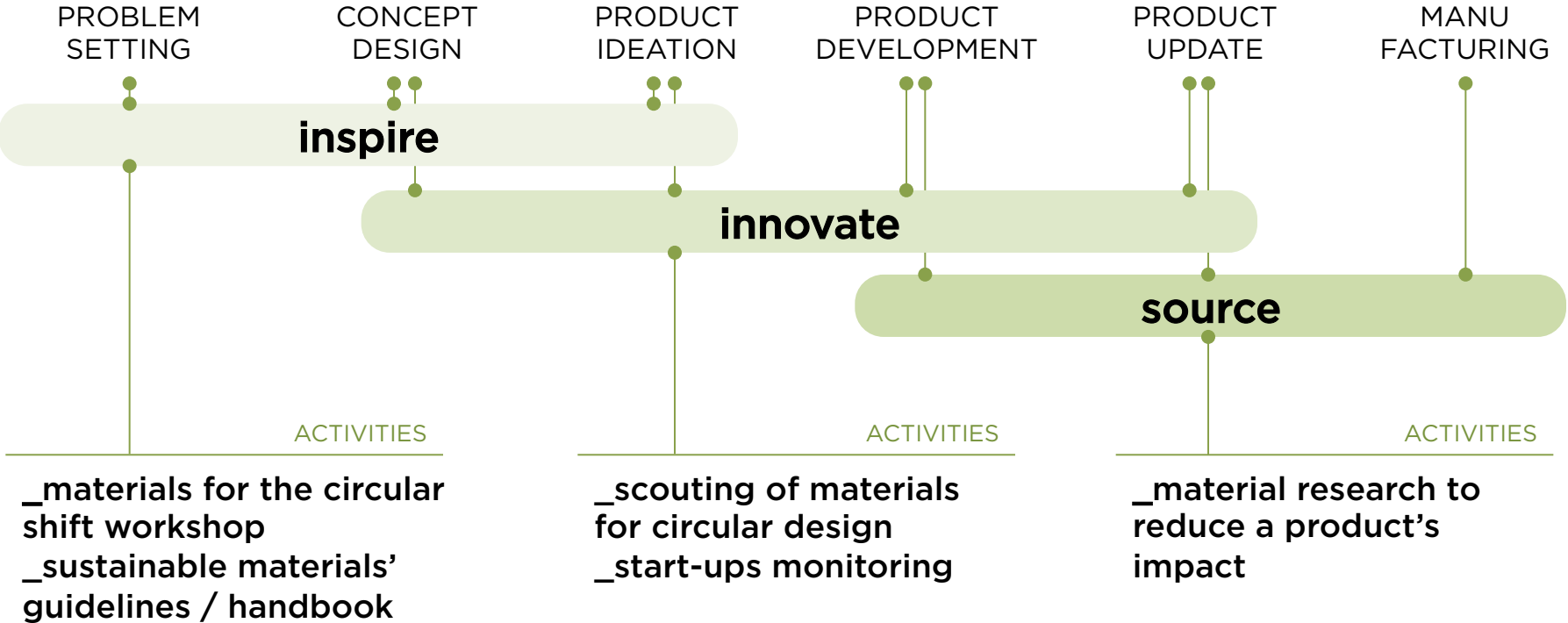
_source
material
solutions



We operate in synergy with your project development workflow:



We support your transition towards circularity:



Expertise and methodology

INNOVATION CLOUD

_we constantly monitor material innovation by connecting with manufacturers, technology providers, research centers, universities, start-ups, and the design world in general.

OUR TEAM

_with a 15+ years experience in tackling with materials, technology, design, and innovation, we quickly translate our knowledge on materials into answers for our Clients.

OUR CLIENTS

_we listen to and tune with our Clients' needs to deliver right what is needed, and constantly interact with the internal teams in order to adjust the research as the project proceeds.

KNOWLEDGE

through

COMPETENCES

into

PROJECTS

generating



Collaboration formats:

tailor-made projects

researches responding a specific need of the Company

HOW IT WORKS

the project content and brief are defined in a meeting or a call (NDA can be signed);

we define a program and develop a quotation based on the brief;

if the quotation is approved by the Company, a PO is issued and the project starts.

on-call packages

an annual program that gives you access to all our services on an hourly basis

HOW IT WORKS

the Company purchases a pre-set package;

when in need, the Company asks for support: the project content and brief is defined in a meeting or a call.

weekly reports on the progress of the project and time consumption are provided.

multiclient services

materials for the circular shift workshop

a workshop for the Company team to introduce main circularity drivers for materials, applied to internal case studies.

materially insight kit

bi-monthly updates on materials trends on pre-defined sectors.

Deliverables

_deliverables are agreed upon with the Company and can include:

MATERIAL SHEETS with description, images, manufacturer's contacts
SAMPLES
CFM MOODBOARD

In form of:

.PDF DOCUMENT
PRESENTATION TO TEAMS
WORKSHOP WITH TEAMS

_examples



MATERIAL SAMPLES BOXES

CFM SCENARIOS



INTRODUCTION TECHNOLOGY

Technologies have not been treated as trends but rather as **opportunities** to evaluate the feasibility of a certain scenario (e.g. foldable screens are not a trend but may be used to implement a foldable-mobile-based scenario).

Besides, available technologies are **much more ahead** than what the average consumer is available to accept, or to pay for.

However, **state-of-the-art technologies** have been explored, although they will be taken into account later when developing the scenarios.

A circular diagram showing various technologies and their applications. The diagram is composed of several circular icons, each representing a different technology or application, such as foldable screens, smart materials, and wearable devices.

OVERVIEW

| CATEGORY | 1 | 2 | 3 | 4 | 5 | 6 | 7 | 8 | |
|----------|----------------------------|---|---|---|---|---|---|---|---|
| 1 | SPINPRODUCTION | 1 | 2 | 3 | 4 | 5 | 6 | 7 | 8 |
| 2 | SERVICES AND SYSTEMS | 1 | 2 | 3 | 4 | 5 | 6 | 7 | 8 |
| 3 | ENVIRONMENTAL CONNECTED | 1 | 2 | 3 | 4 | 5 | 6 | 7 | 8 |
| 4 | SAFETY CONTROL | 1 | 2 | 3 | 4 | 5 | 6 | 7 | 8 |
| 5 | MATERIALS IN THE FAST LANE | 1 | 2 | 3 | 4 | 5 | 6 | 7 | 8 |
| 6 | SOCIAL DEVELOPMENT | 1 | 2 | 3 | 4 | 5 | 6 | 7 | 8 |
| 7 | PERSONAL EXPERIENCES | 1 | 2 | 3 | 4 | 5 | 6 | 7 | 8 |
| 8 | LIVINGWARE MATERIALS | 1 | 2 | 3 | 4 | 5 | 6 | 7 | 8 |

HYBRID OBJECTS

A diagram showing various hybrid objects, including a watch, a smartwatch, and a smartwatch with a foldable screen.

MATERIAL TREND REPORTS

MATERIAL SAMPLES



We are

PRESIDENT:
Rodrigo Rodriquez
CEO:
Emilio Genovesi

_team

RESEARCH&CONSULTING:

_Micol Costi
_Anna Pellizzari
_Claudia Reder
_Valentina Ventrelli

EU PROJECTS:

_Daniela Amandolese
_Veronica Sarbach

PROMOTION&EVENTS:

_Federica Pastonesi
_Daniela Scalia
_Giovanna Sicignano
_Monica Sozzi

_facilities

A 430 mq space located in Building 16 of the former Ansaldo Group industrial complex, where we host seminars, workshop, events on material innovation.



Materially Srl Impresa Sociale
Viale Sarca 336 Ed. 16
20126 Milano - Italy
T +39 02 8689 1721
CF / P.IVA IT10972870967
E info@materially.eu
materially.eu