



ANALOG

Of Movement of Material
2020 Edition

About Analog

Analog intersects established craft techniques with the latest technologies.

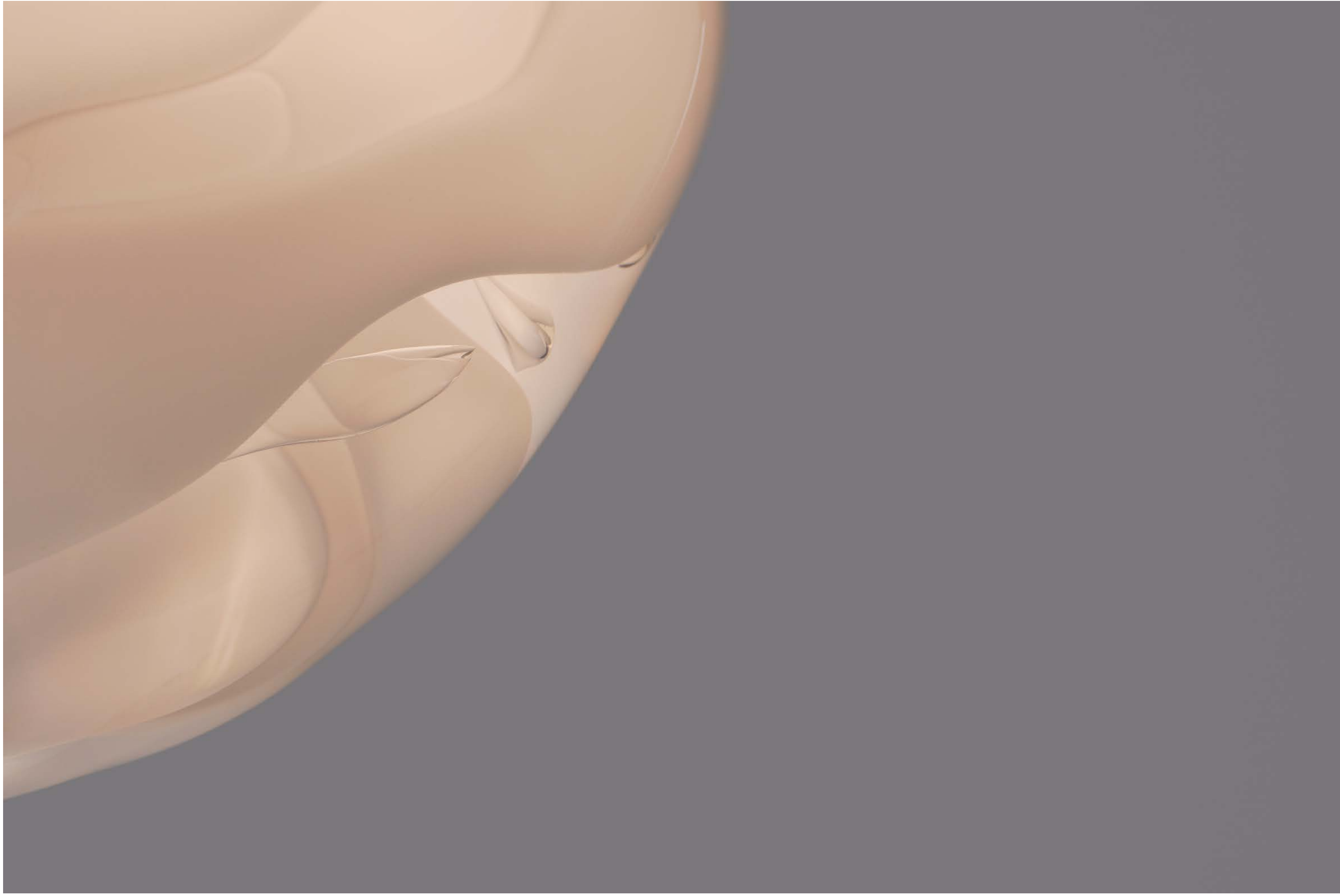
Born out of the desire to preserve and implement tried and true glassblowing processes, contemporary lighting brand Analog embodies the best of this ancient practice while also demonstrating a refined design perspective. In a world where digitalization has all but replaced skilled trades, Analog's commitment to safeguarding the handcrafts extends to the promotion of knowledge and the fostering of a »glocal« creative community.

Of Movement and Material

Of Movement and Material is a pendant lamp series that translates and materializes the rhapsodic dance of glassblowing. Each bespoke luminaire is shaped according to the nuanced gestures of the human body in action; the fluctuating pitch and pivot of glass pipes and the masterful hands that guide them. These multilayered yet self-contained orbs ebb and flow in various directions, refracting light through sinuous curves. These one-of-a-kind statement pieces are produced locally at Berlin Glassworks.

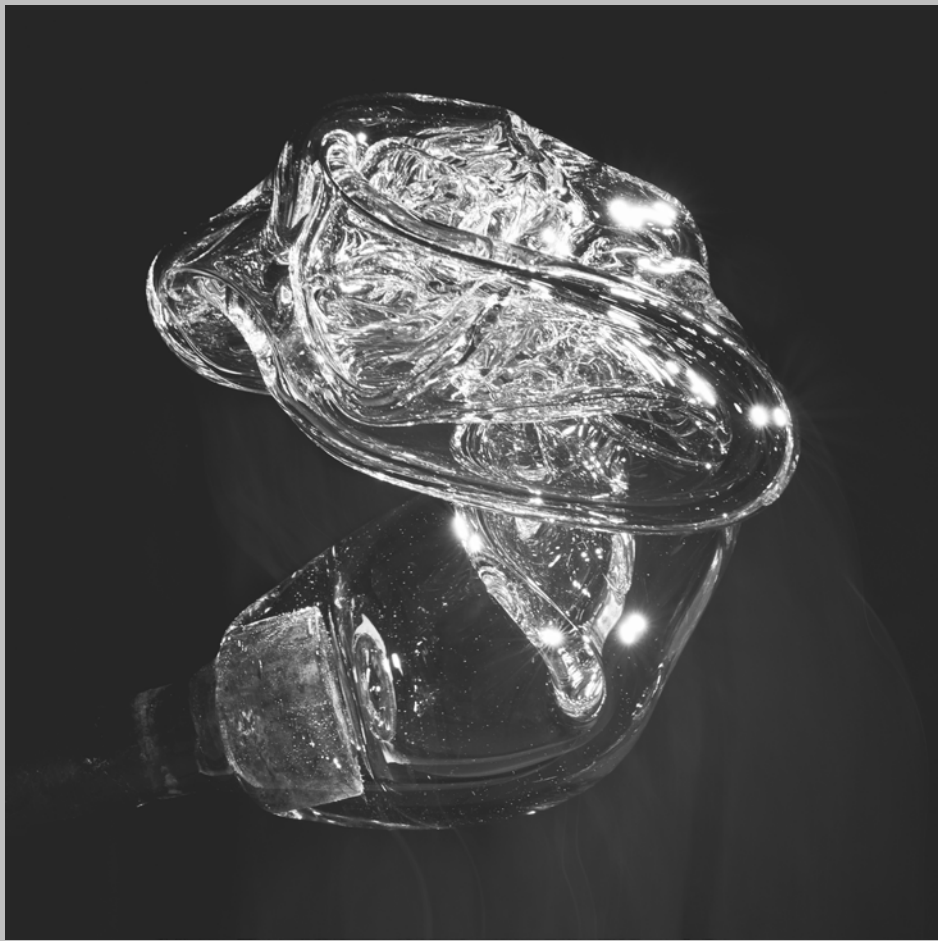
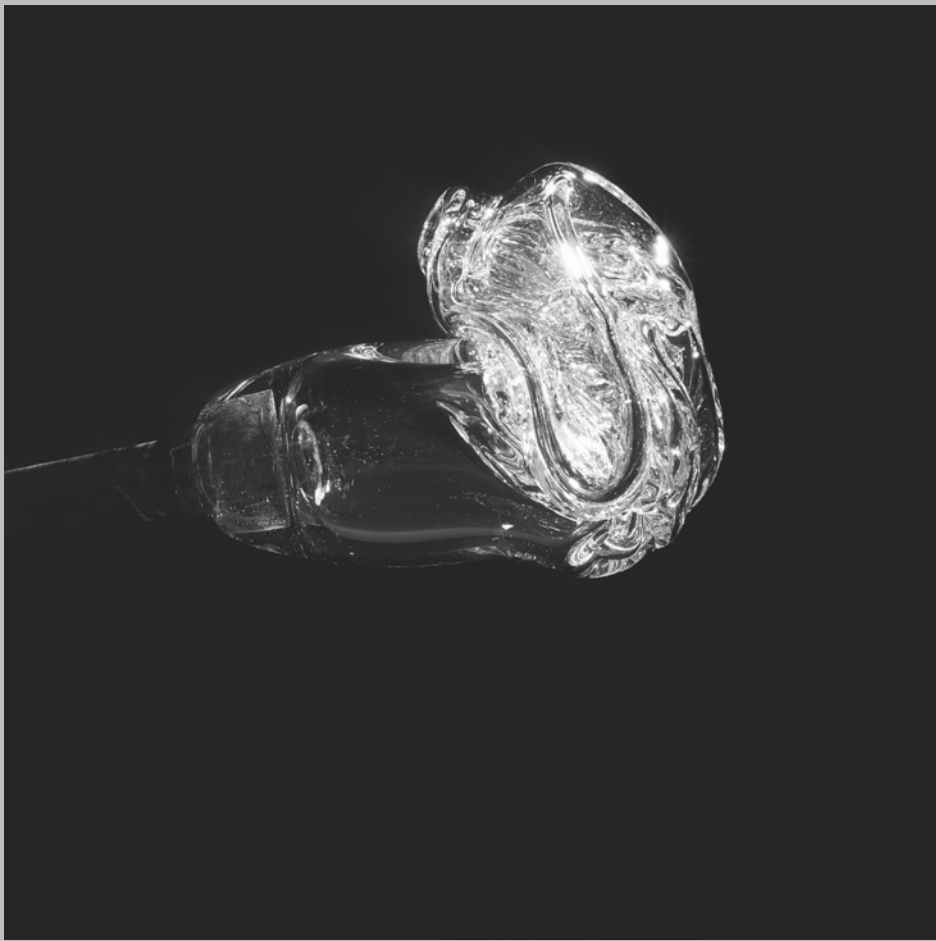
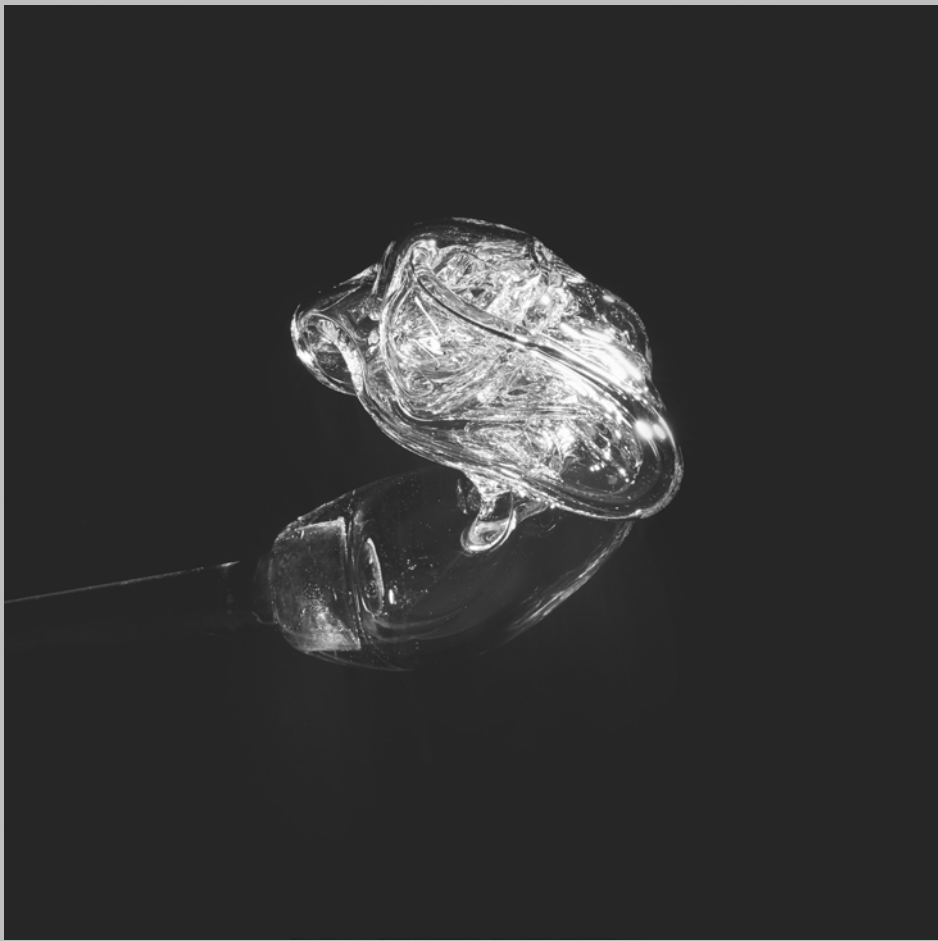
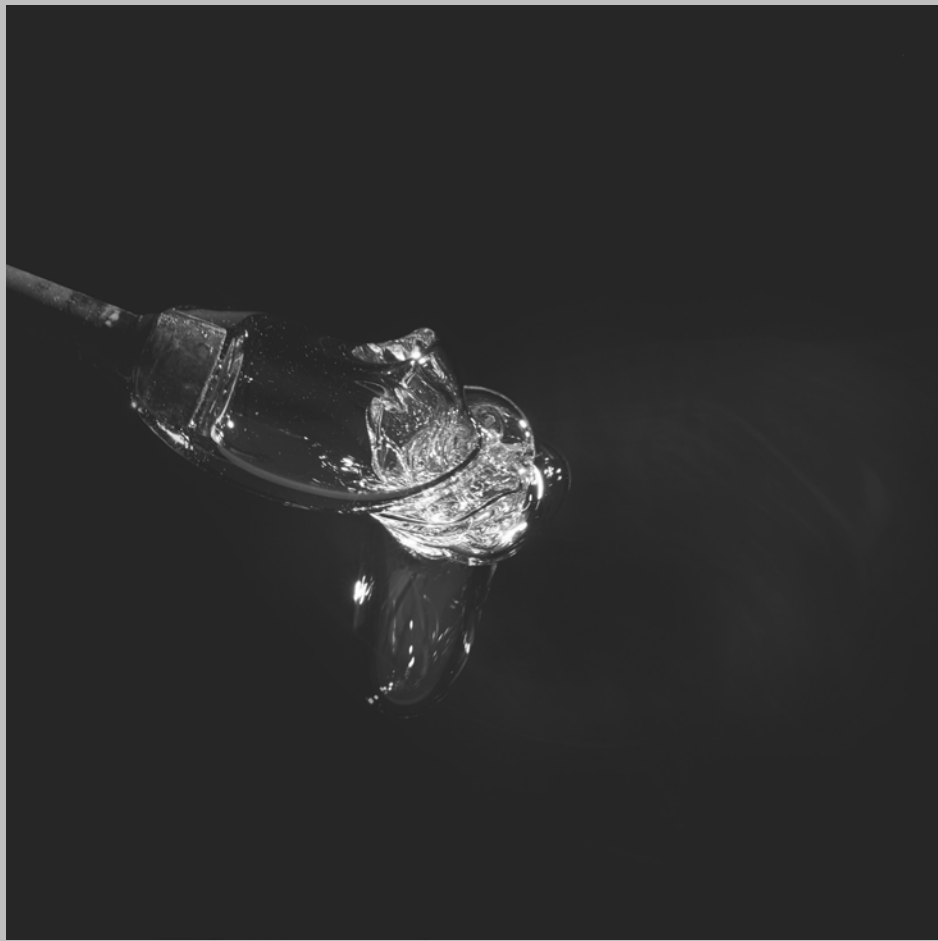
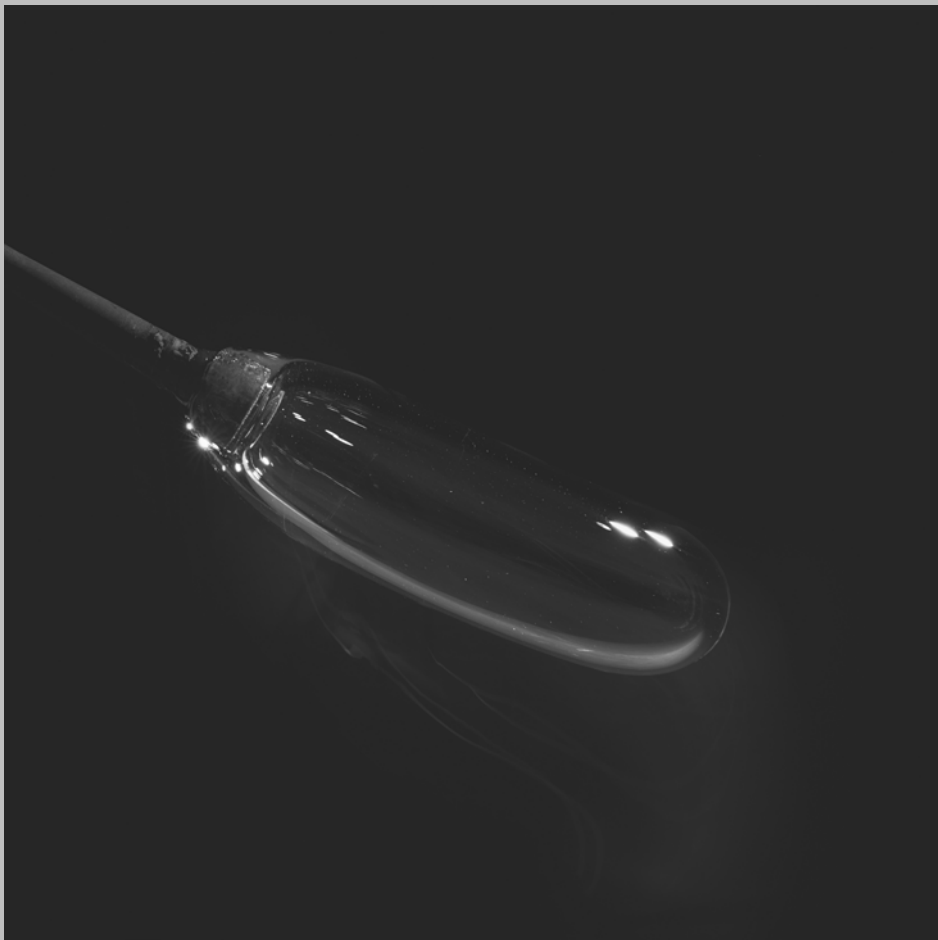
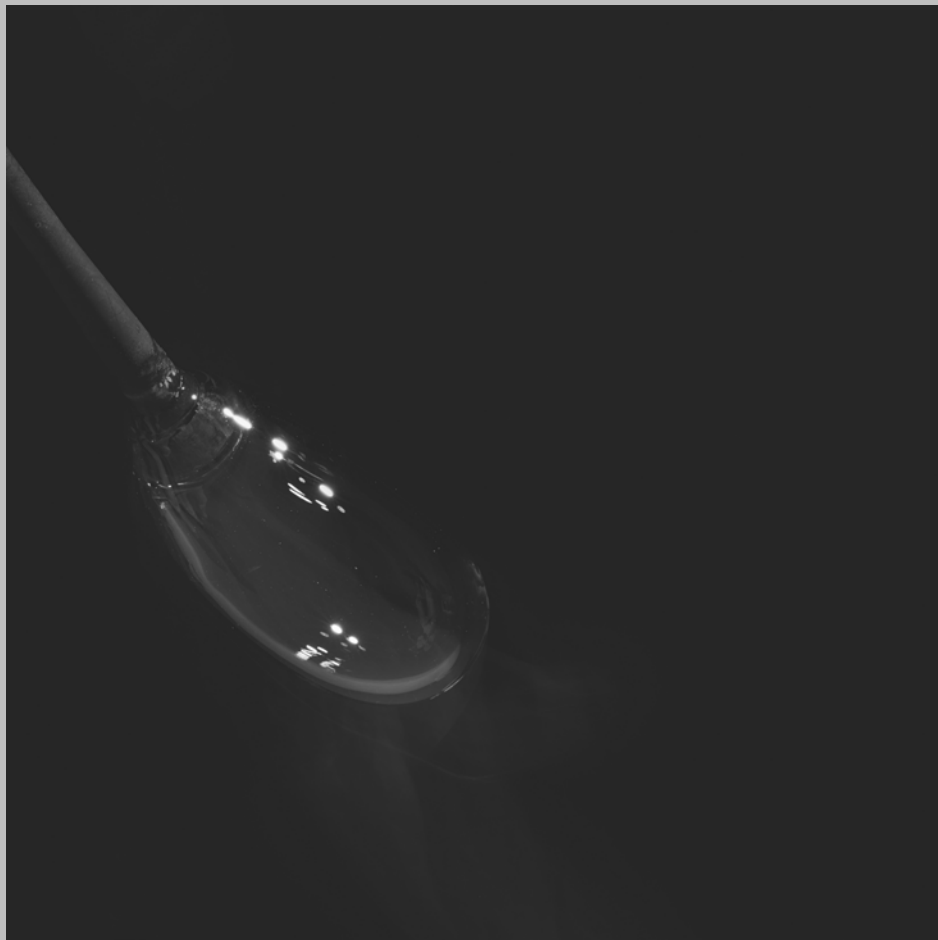






The dance of the glassblower during
the manufacturing process





Of Movement and Material

2020 Edition

The second iteration of Analog's Of Movement and Material series presents the bespoke luminaires in a new colourway. Released this year through an online showcase, The Of Movement and Material Black series reveals the brand's interest in integrating new technologies to demonstrate and evoke the physical act of glassblowing.

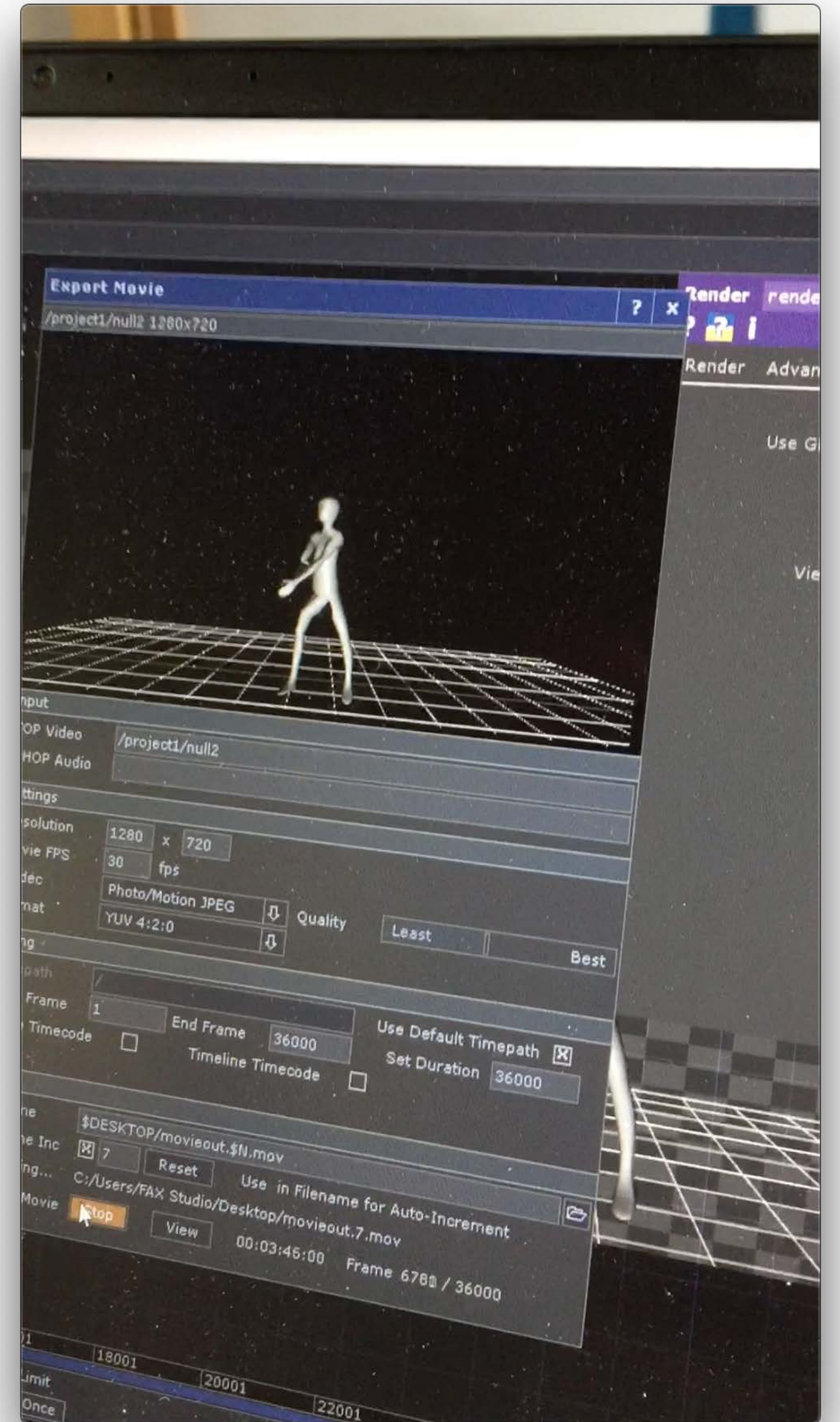
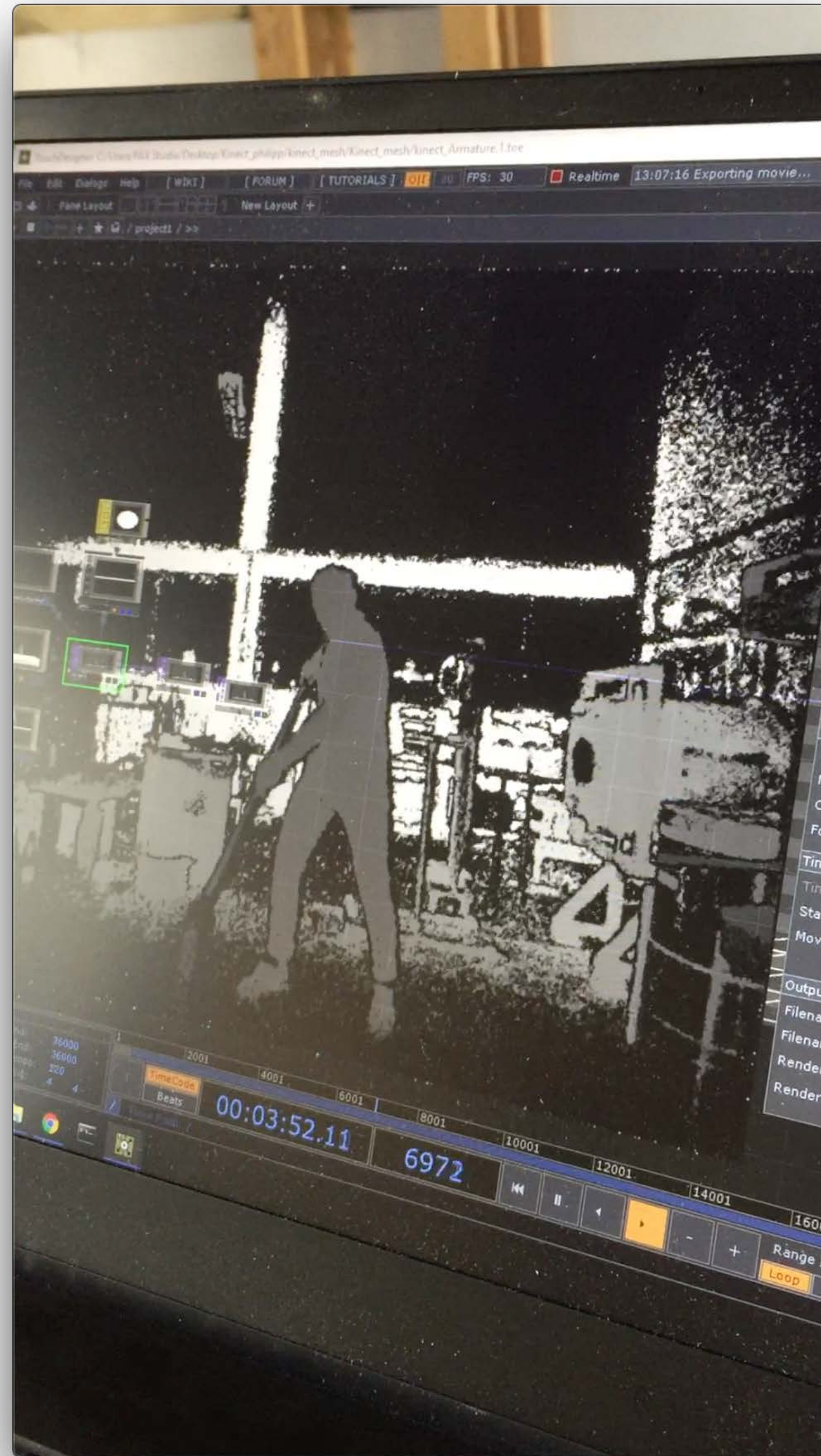


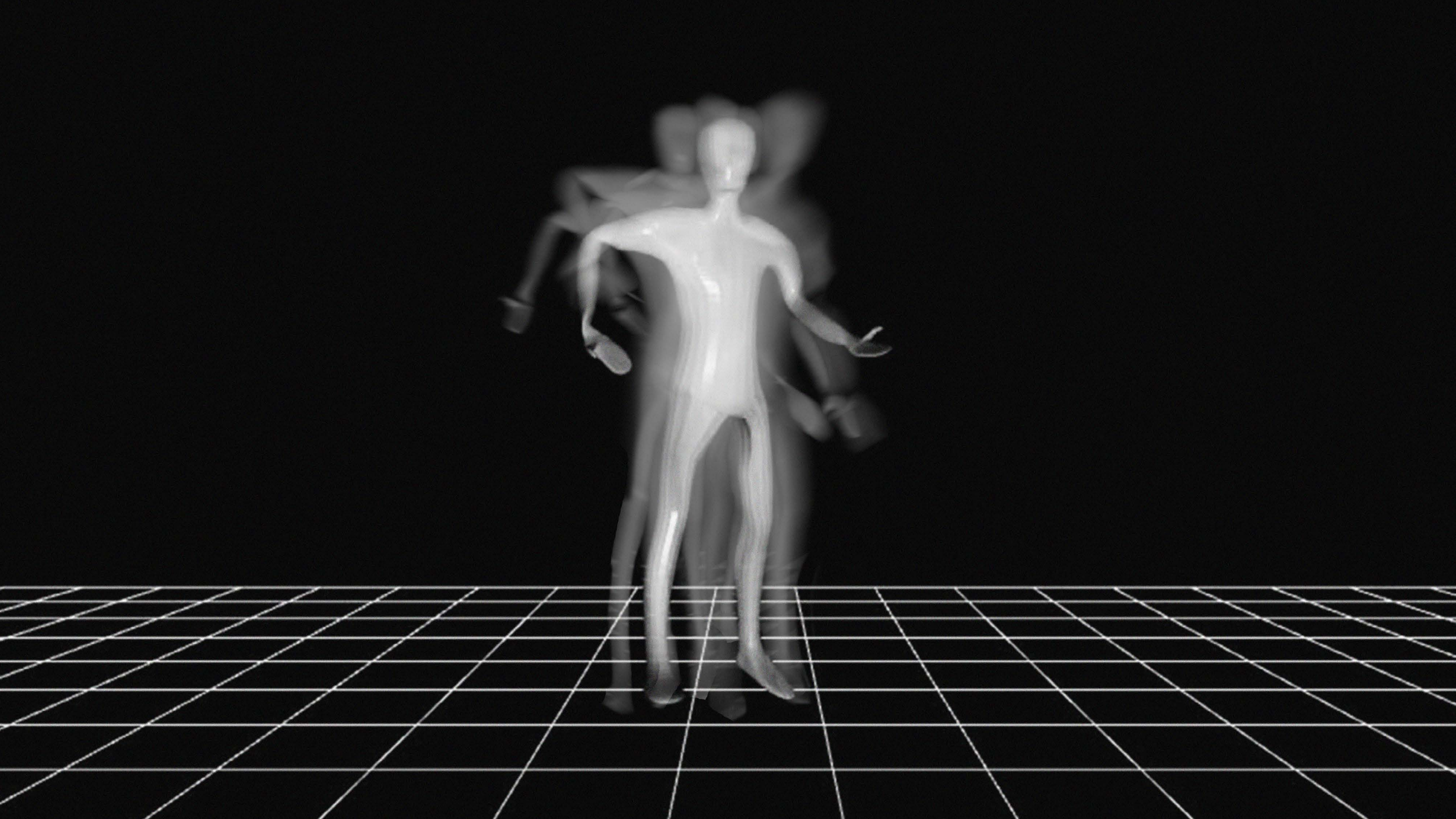




Tacit Dialogues Research

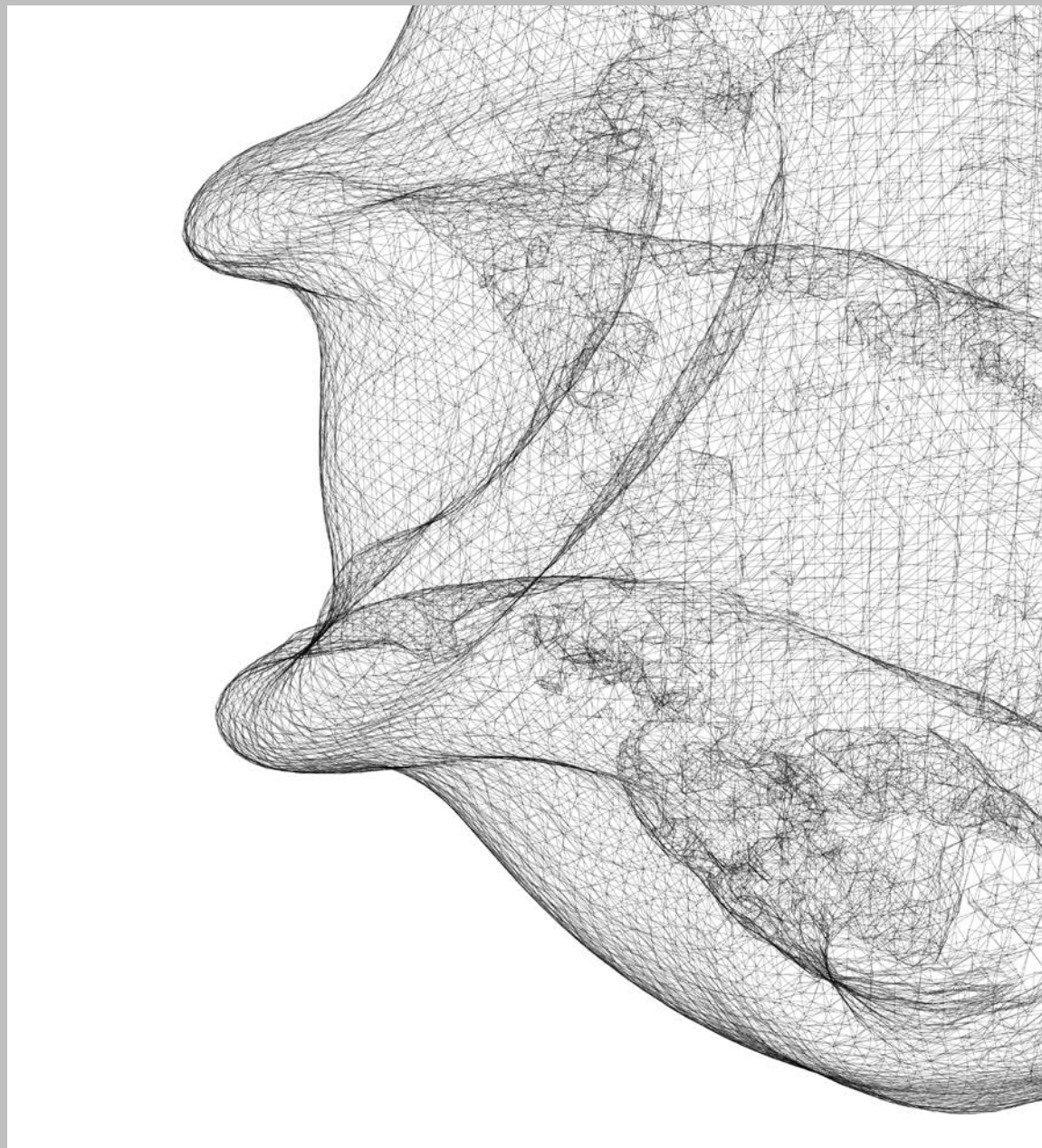
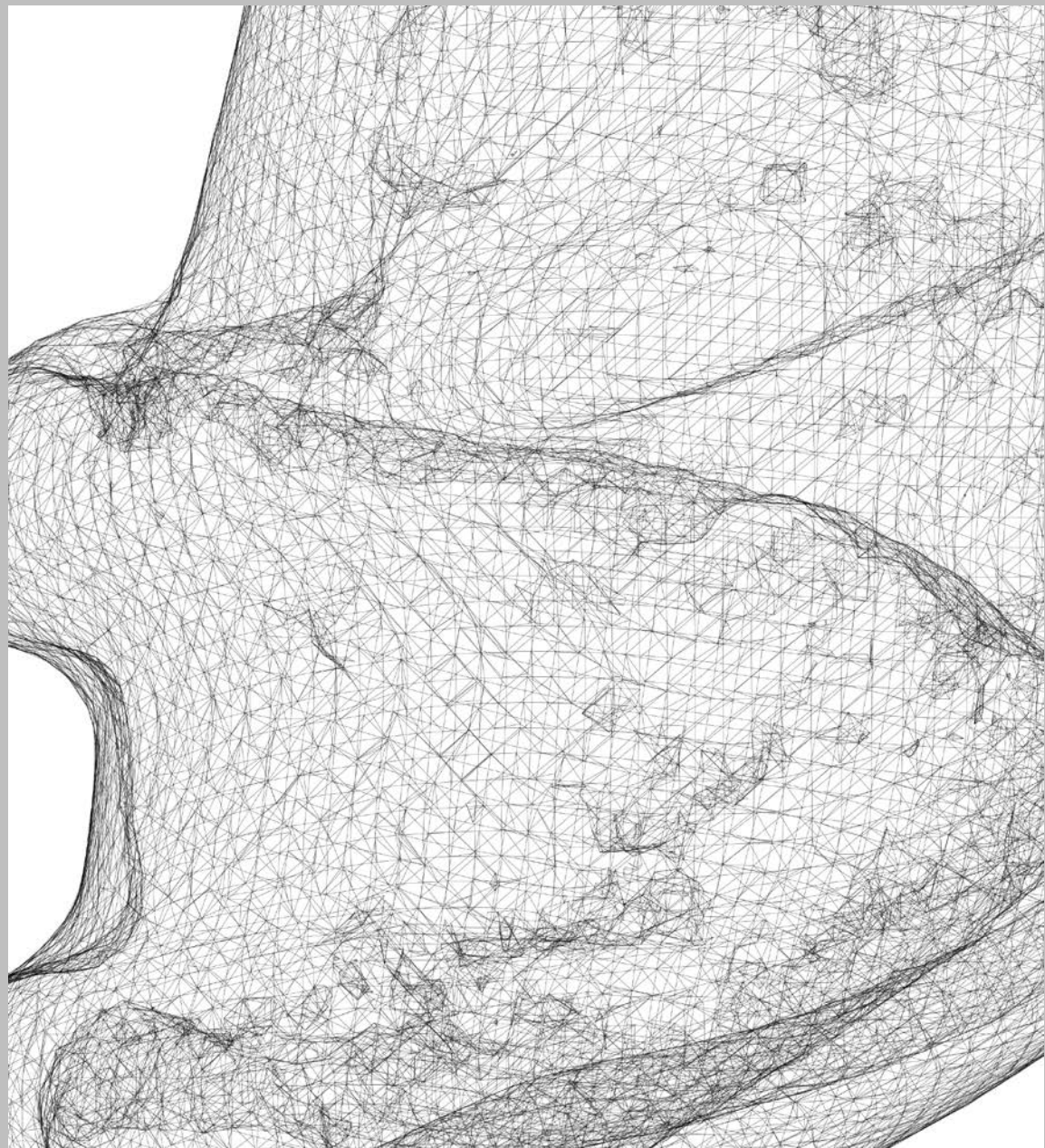
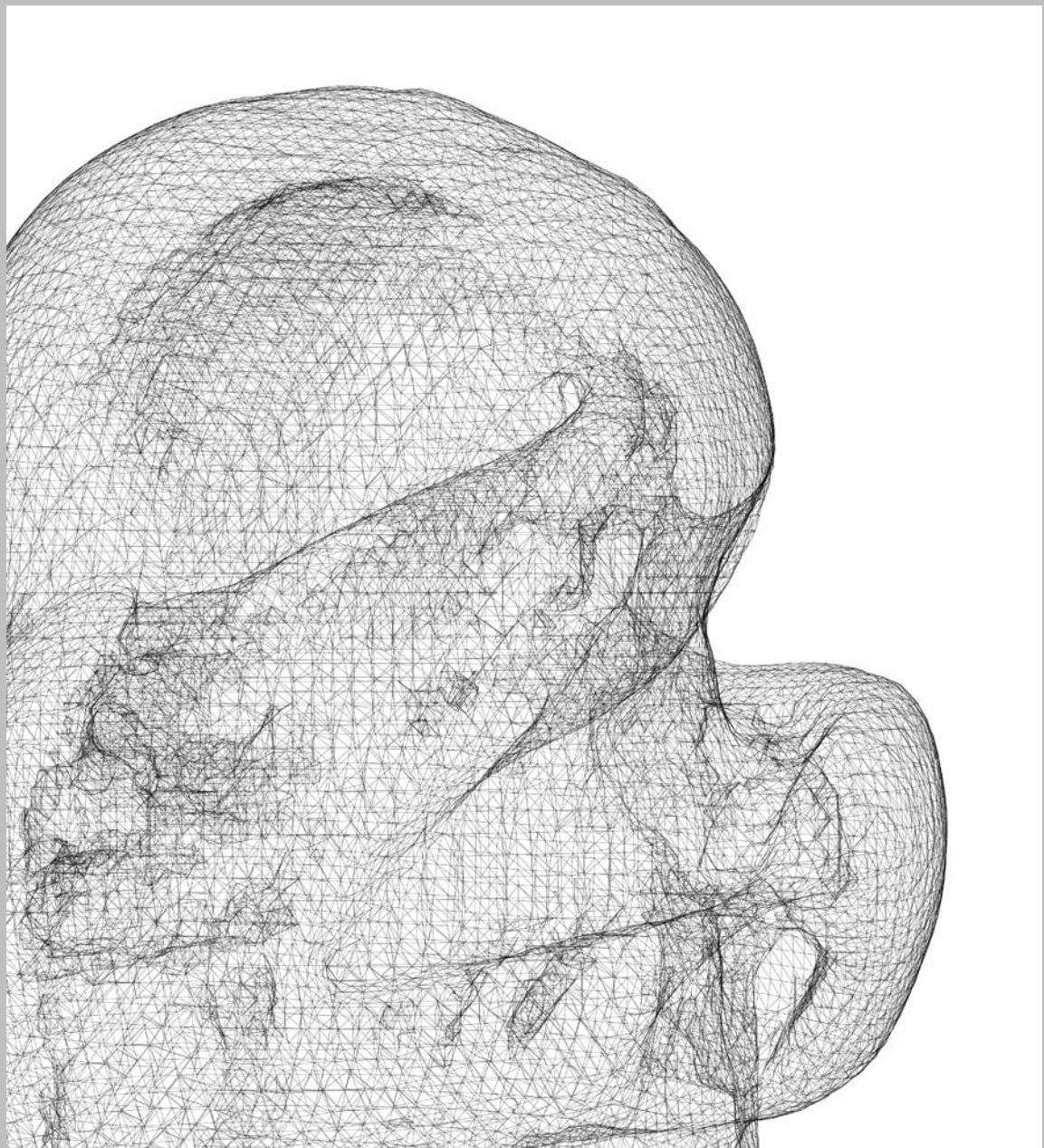
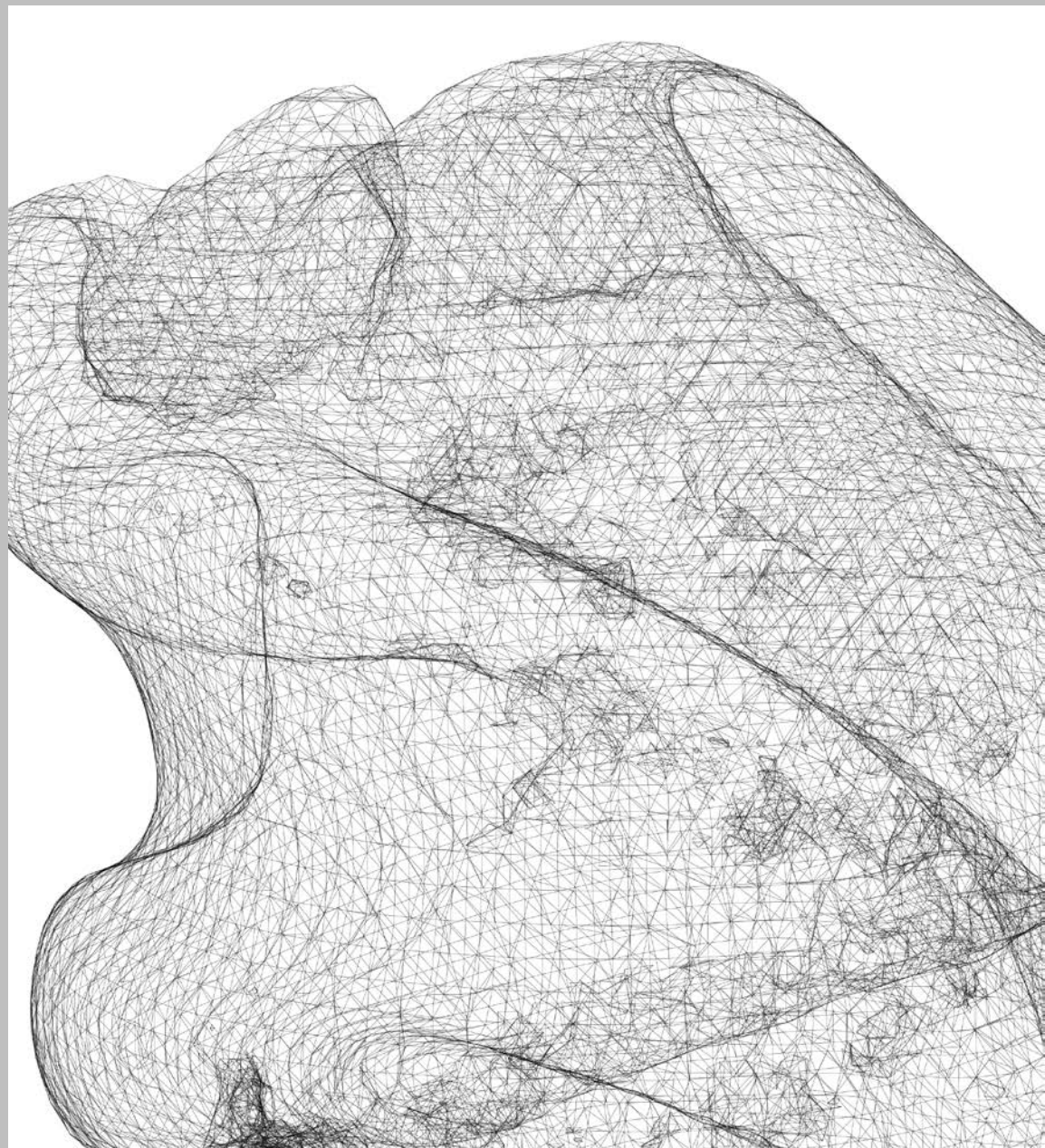
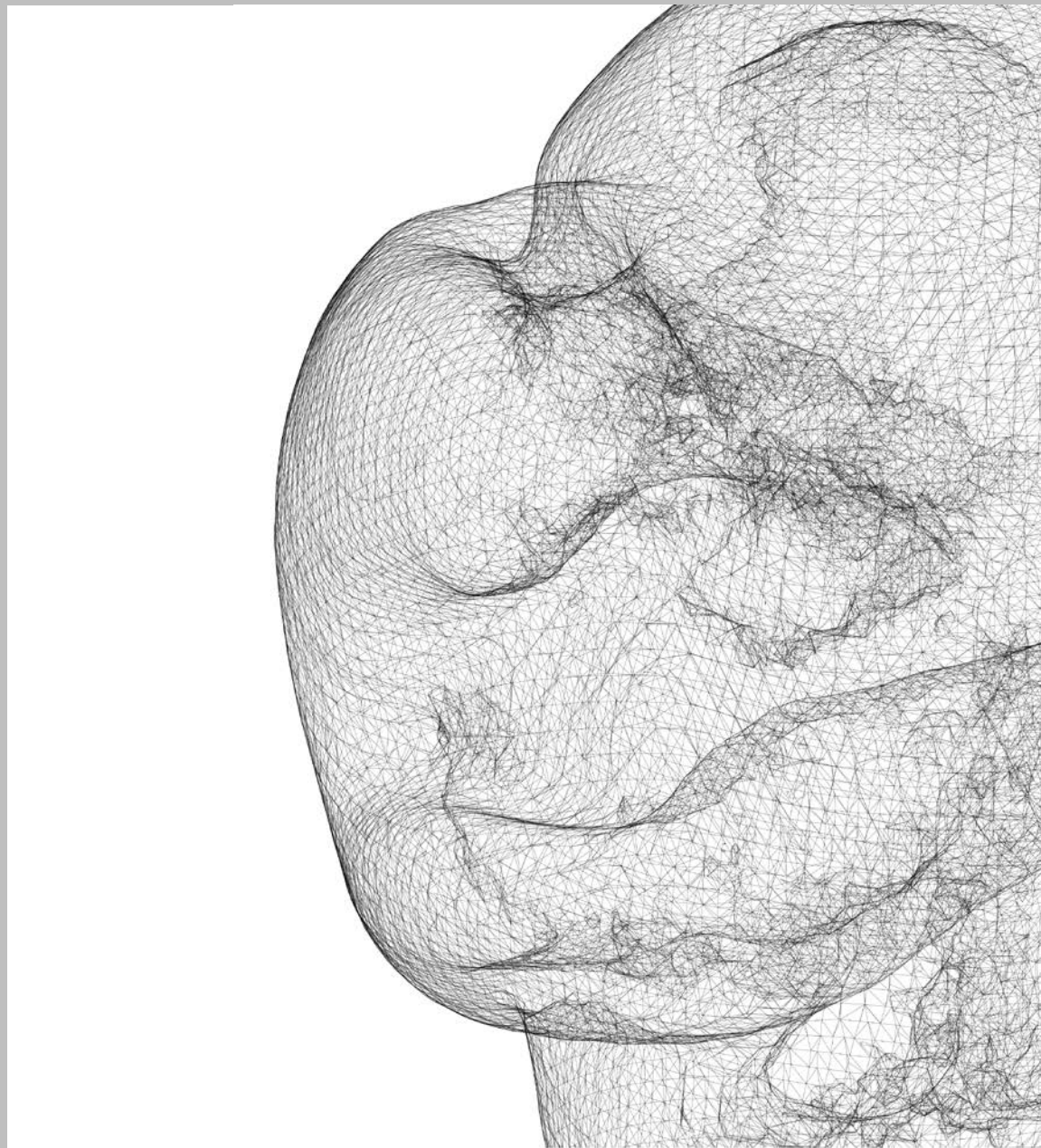
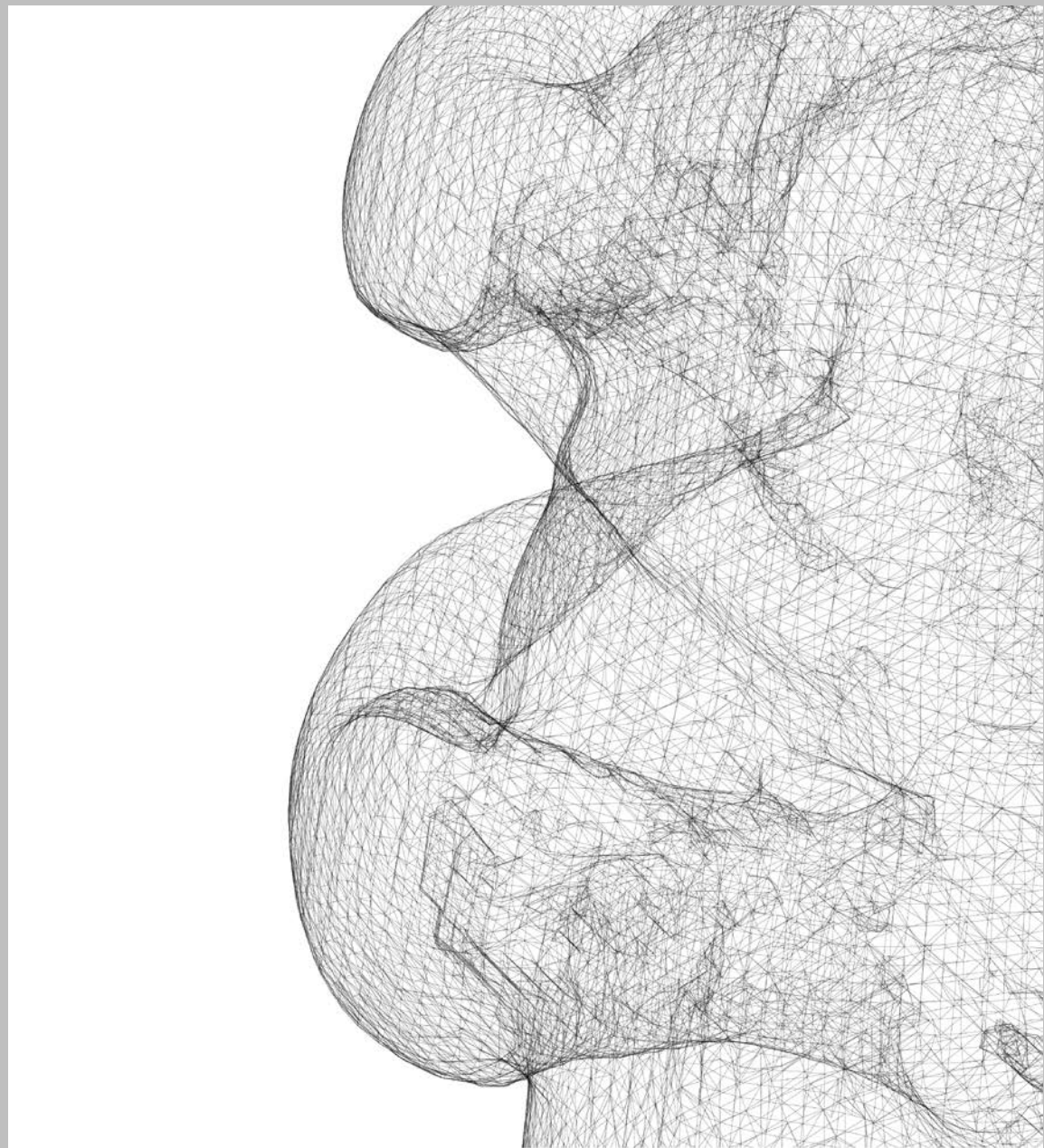
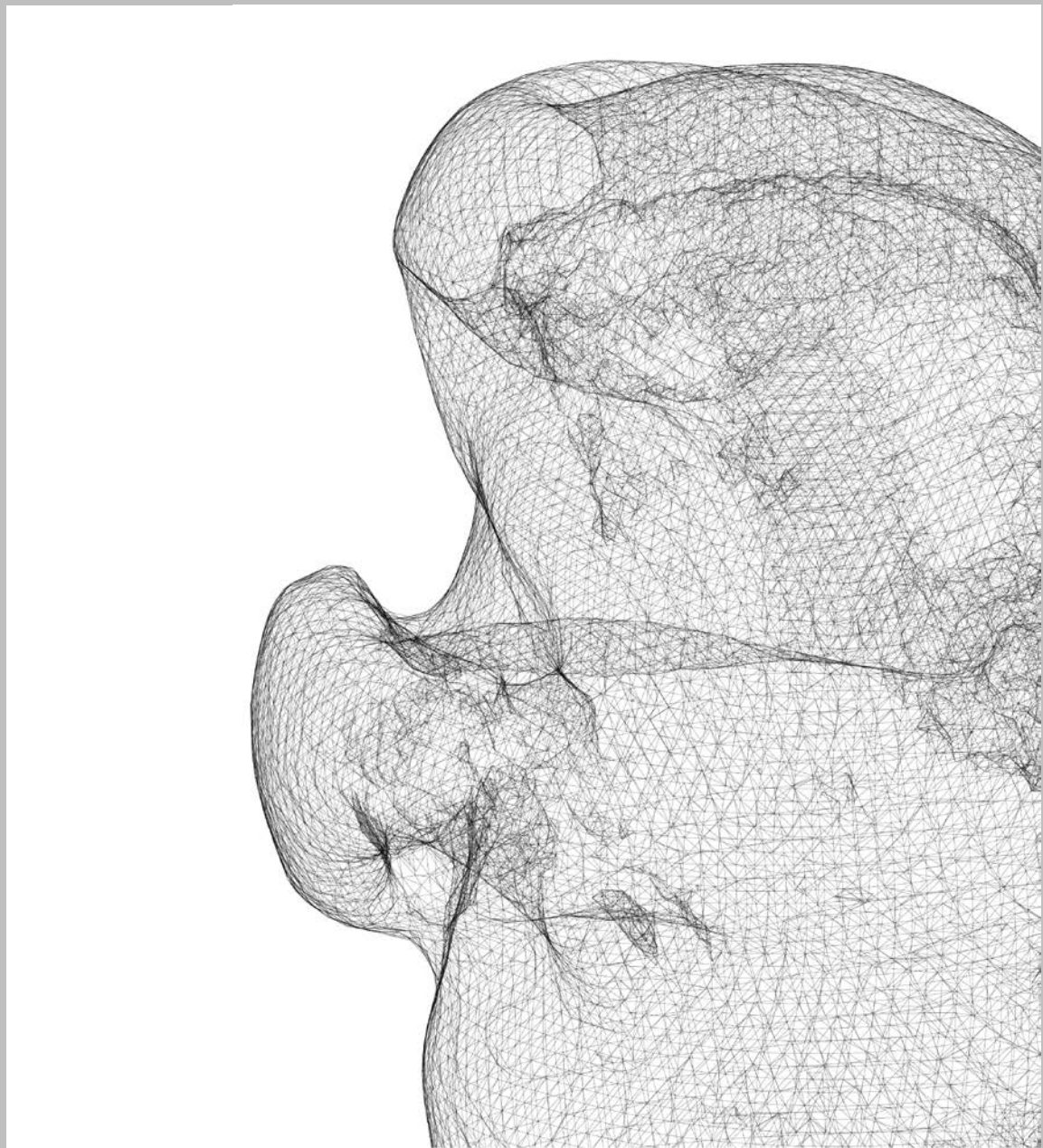
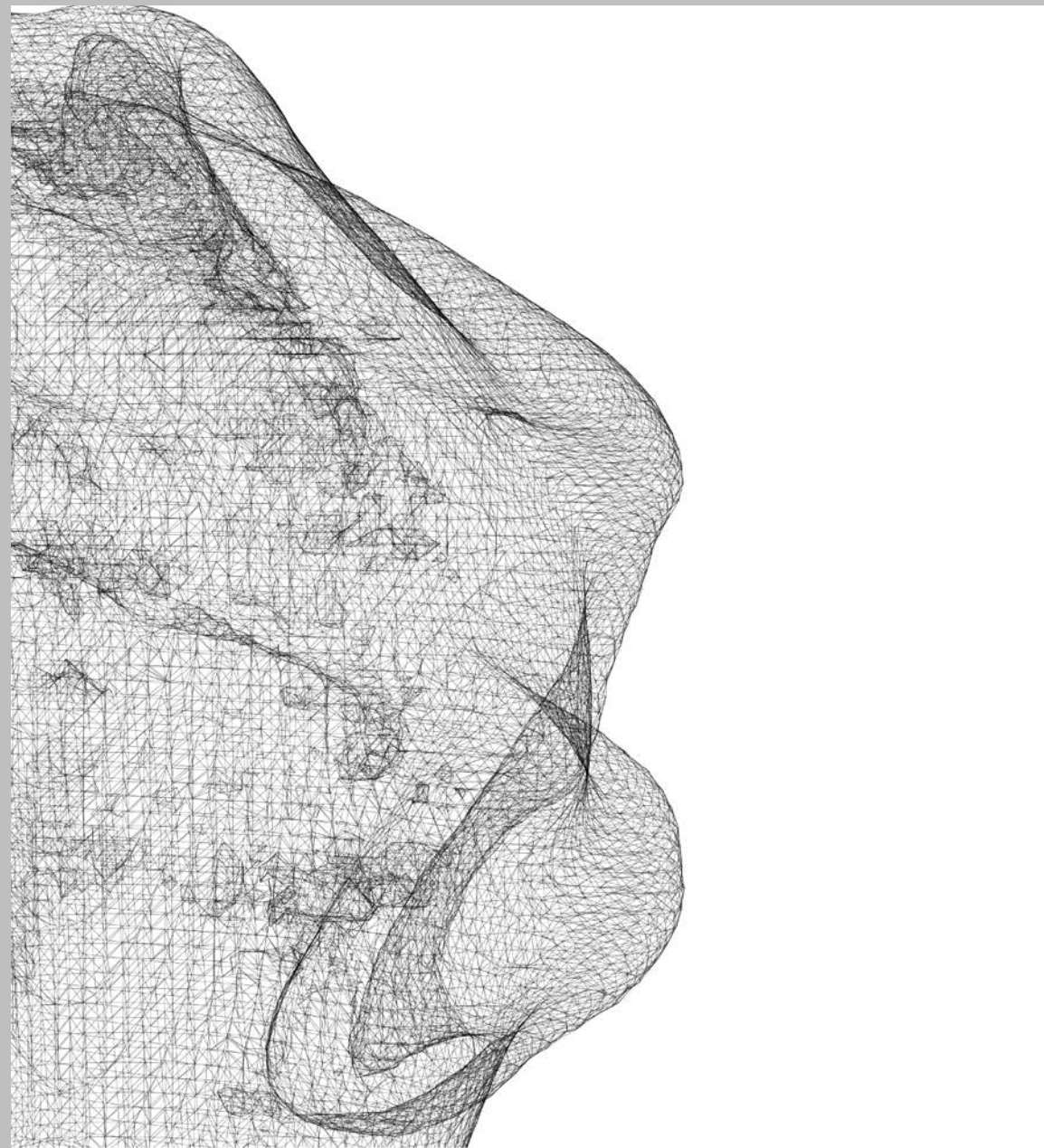
The new collection coincides with the Tacit Dialogues research project that Analog and media artist Andrea Familiarì began developing in 2019. Investigating how much of a craft process can actually be digitized, the pairing sought out to build a digital archive of production choreographies; tracking the dance of glassblowers during the manufacturing process as well as making corresponding 3D-scans of the resulting glass objects.







EIN SOMMERNACHTSTRAUM
2018



ANALOG

All rights reserved.

ANALOG Contacts:

+49 176 228 61546
blow@analog.glass

ANALOG is a trademark of
Berlin Glassworks GmbH
Provinzstr. 42a
13409 Berlin

For further information visit
www.analog.glass